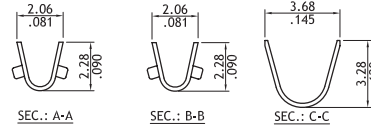
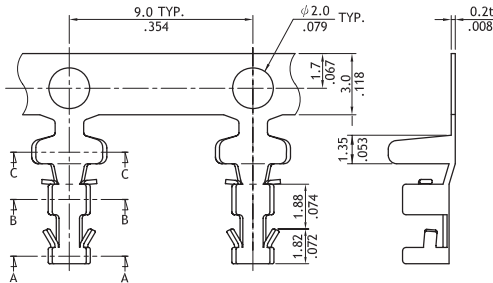


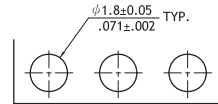
CT09/CT10/CT11/CT12 Series Board in Terminal

RoHS Compliant

● CT09

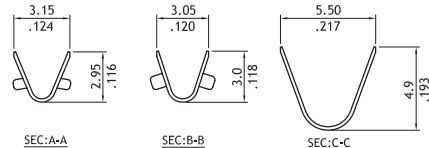
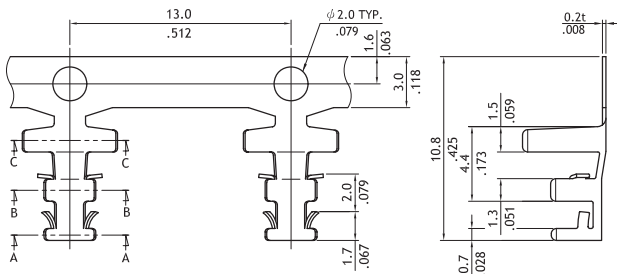


Part No.	Wire Range	Insulation Diameter	Reel Q'ty
CT09T031PE0	AWG #18-#22	2.05 (.079) MAX.	7,500 PCS.

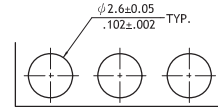


Recommended P.C. Board Layout

● CT10

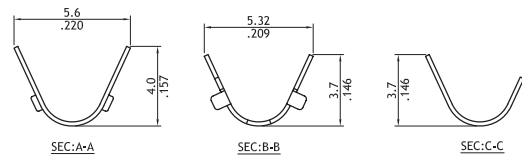
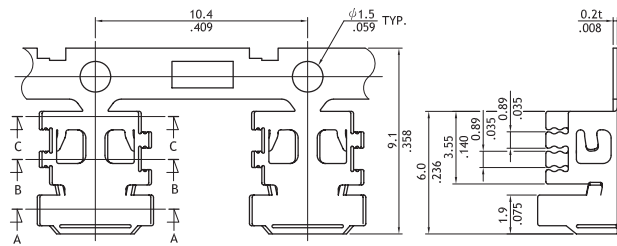


Part No.	Wire Range	Insulation Diameter	Reel Q'ty
CT10TA31PE0	AWG #18x2	2.05 (.079) MAX.	3,500 PCS.

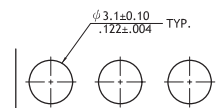


Recommended P.C. Board Layout

● CT11

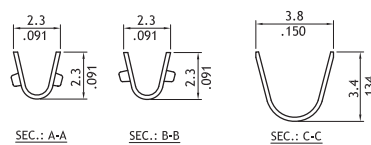
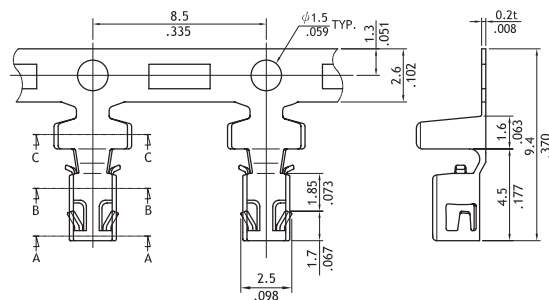


Part No.	Wire Range	Insulation Diameter	Reel Q'ty
CT11TA31PE0	AWG #18x(3-4)	2.05 (.079) MAX.	3,500 PCS.

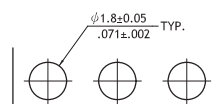


Recommended P.C. Board Layout

● CT12



Part No.	Wire Range	Insulation Diameter	Reel Q'ty
CT12T031PP0	AWG #18-#24	2.1 (.083) MAX.	7,000 PCS.



Recommended P.C. Board Layout