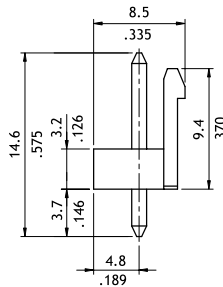
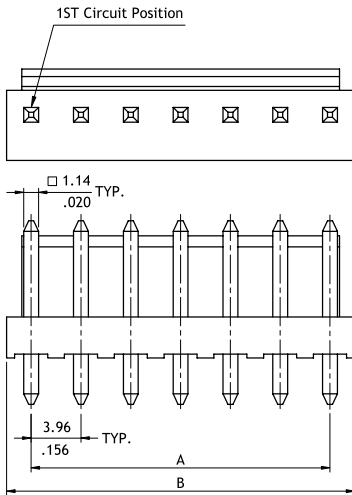
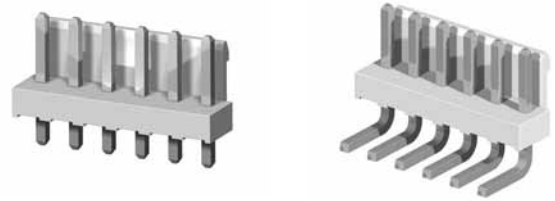
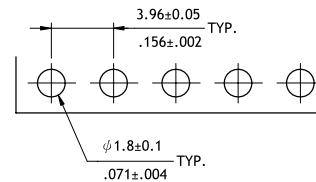
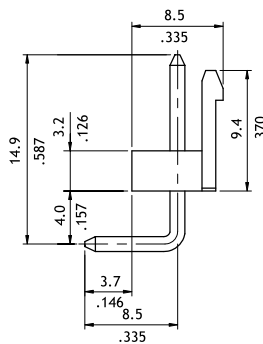
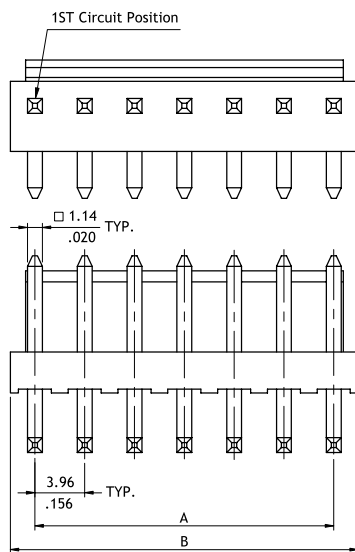


CI52 Series 3.96mm(.156") DIP Headers

- ⊙ With locking wall
- ⊙ Mate with CI52 housing
- ⊙ Insulator: Polyamide UL 94V-0 , Color Nature
- ⊙ With Tin plated 1.14mm square pin



Circuits	Dimension	
	A	B
2	3.96(.156)	7.8(.307)
3	7.92(.312)	11.8(.465)
4	11.88(.468)	15.8(.622)
5	15.84(.624)	19.7(.776)
6	19.80(.780)	23.7(.933)
7	23.76(.936)	27.6(1.087)
8	27.72(1.091)	31.6(1.244)
9	31.68(1.247)	35.5(1.398)
10	35.64(1.403)	39.5(1.555)
11	39.60(1.559)	43.5(1.713)
12	43.56(1.715)	47.4(1.866)



Recommended P.C. Board Layout

Ordering Code

1 2 3 4 5 6 7
CI52 12 P 1 V 00 - LF

- 1** Series No.
- 2** No. of Circuits: 02 to 12
- 3** P = DIP header
- 4** Plating code:
1 = Tin over Nickel
- 5** Type: V = Straight
H = Right angle
- 6** Other Options: 00 = Standard
*Special options consult manufacturer
- 7** Process:
-LF = For Lead Free soldering process