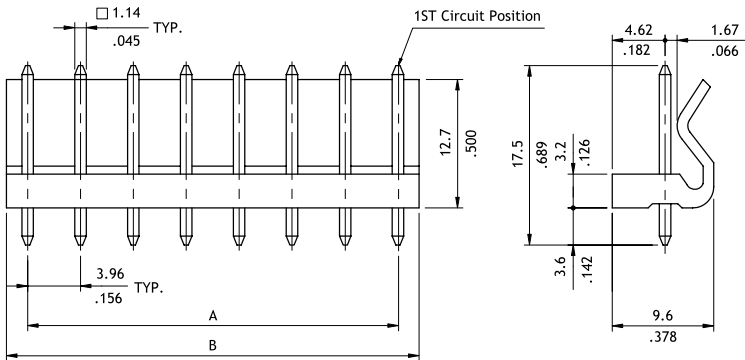
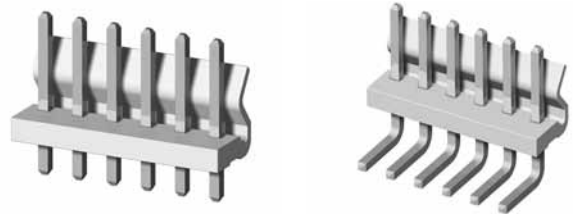
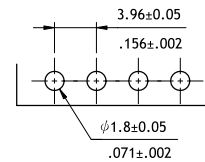
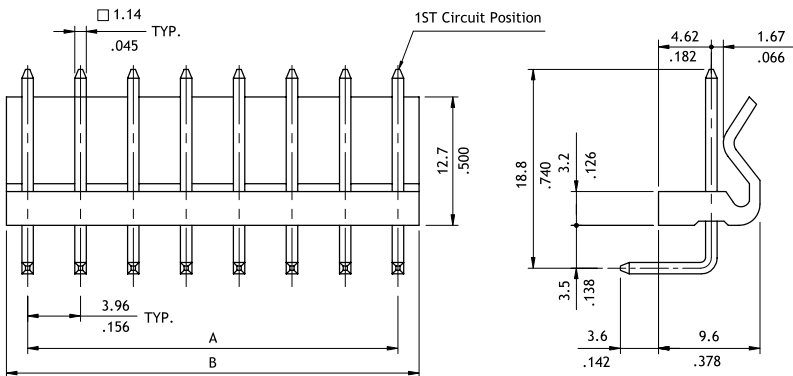


CI51 Series 3.96mm(.156") DIP Headers

- ⊙ With locking wall
- ⊙ Mate with CI51 housing
- ⊙ Insulator: Nylon 66 UL 94V-2 , Color Nature
- ⊙ With Tin plated 1.14mm square pin



Circuits	Dimension	
	A	B
2	3.96(.156)	7.92(.312)
3	7.92(.312)	11.88(.468)
4	11.88(.468)	15.84(.624)
5	15.84(.624)	19.8(.780)
6	19.80(.780)	23.76(.935)
7	23.76(.935)	27.72(1.091)
8	27.72(1.091)	31.68(1.247)
9	31.68(1.247)	35.64(1.403)
10	35.64(1.403)	39.6(1.559)
11	39.60(1.559)	43.56(1.715)
12	43.56(1.715)	47.52(1.871)
13	47.52(1.871)	51.48(2.027)
14	51.48(2.027)	55.44(2.183)
15	55.44(2.183)	59.4(2.339)
16	59.40(2.339)	63.36(2.494)
17	63.36(2.494)	67.32(2.650)
18	67.32(2.650)	71.28(2.806)
19	71.28(2.806)	75.24(2.962)
20	75.24(2.962)	79.2(3.118)



Recommended P.C. Board Layout

Ordering Code

1 **2** **3** **4** **5** **6**
CI51 **20** **P** **1** **V** **00**

- 1** Series No.
- 2** No. of Circuits: 02 to 20
- 3** P = DIP header
- 4** Plating code:
1 = Tin over Nickel
- 5** Type: V = Straight
H = Right angle
- 6** Other Options: 00 = Standard
*Special options consult manufacturer