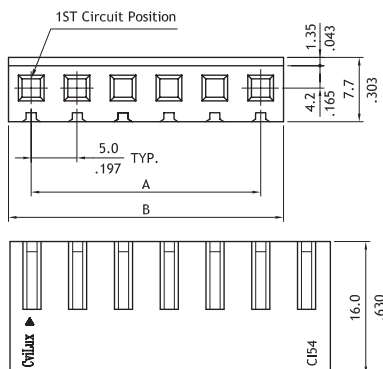
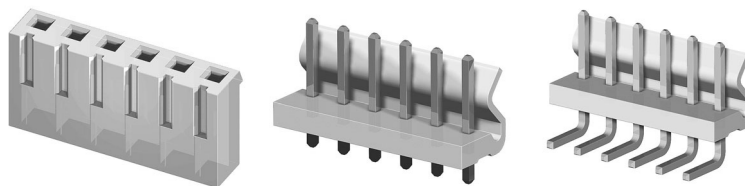


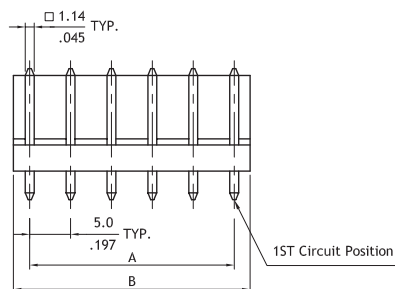
CI54 Series 5.00mm(.197") Wire to Board Connector

- Housing with locking ramp
- Header with locking wall
- Mate with CI54 , CI78 header
- Can be used CI51 crimp clip terminal
- Insulator: Nylon 66 UL 94V-2 , Color Nature
- With Tin plated 1.14mm square pin
- Terminal: Tin plated Brass

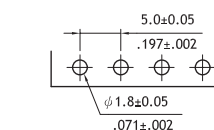
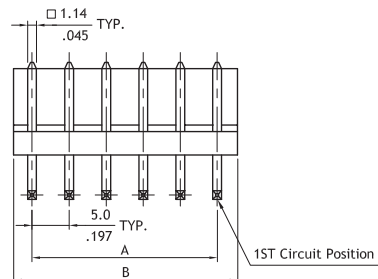
RoHS Compliant **HF** **AL**



Circuits	Dimension	
	A	B
2	5.0(.197)	10.0(.394)
3	10.0(.394)	15.0(.591)
4	15.0(.591)	20.0(.787)
5	20.0(.787)	25.0(.984)
6	25.0(.984)	30.0(1.181)
7	30.0(1.181)	35.0(1.378)
8	35.0(1.378)	40.0(1.575)
9	40.0(1.575)	45.0(1.772)
10	45.0(1.772)	50.0(1.969)



Circuits	Dimension	
	A	B
2	5.0(.197)	10.3(.406)
3	10.0(.394)	15.3(.602)
4	15.0(.591)	20.3(.799)
5	20.0(.787)	25.3(.996)
6	25.0(.984)	30.3(1.193)
7	30.0(1.181)	35.3(1.390)
8	35.0(1.378)	40.3(1.586)
9	40.0(1.574)	45.3(1.783)
10	45.0(1.771)	50.3(1.980)



Recommended P.C. Board Layout

Ordering Code

1 **2** **3** **4**
CI54 **10** **S** **0000**

- 1** Series No.
- 2** No. of Circuits: 02 to 10
- 3** S= housing
- 4** Other options:
0000= Standard
*Special options consult manufacturer

1 **2** **3** **4** **5** **6**
CI54 **10** **P** **1** **V** **00**

- 1** Series No.
- 2** No. of Circuits: 02 to 10
- 3** P= DIP header
- 4** Plating code: 1= Tin over Nickel
- 5** Type: V= Vertical
H= Right angle
- 6** Other options: 00= Standard
*Special options consult manufacturer