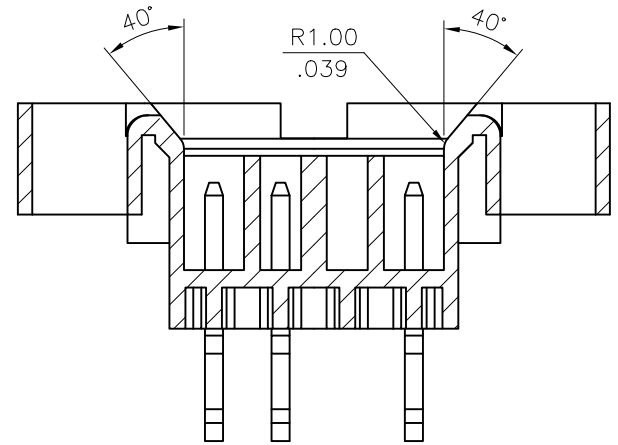
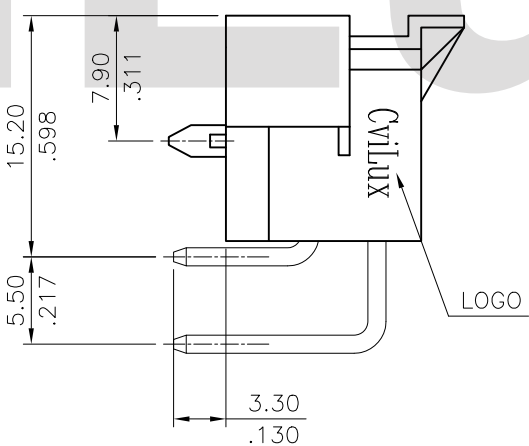


Material & Finish :
 * Insulation: Nylon 66 , Color Nature
 * Contact: Brass



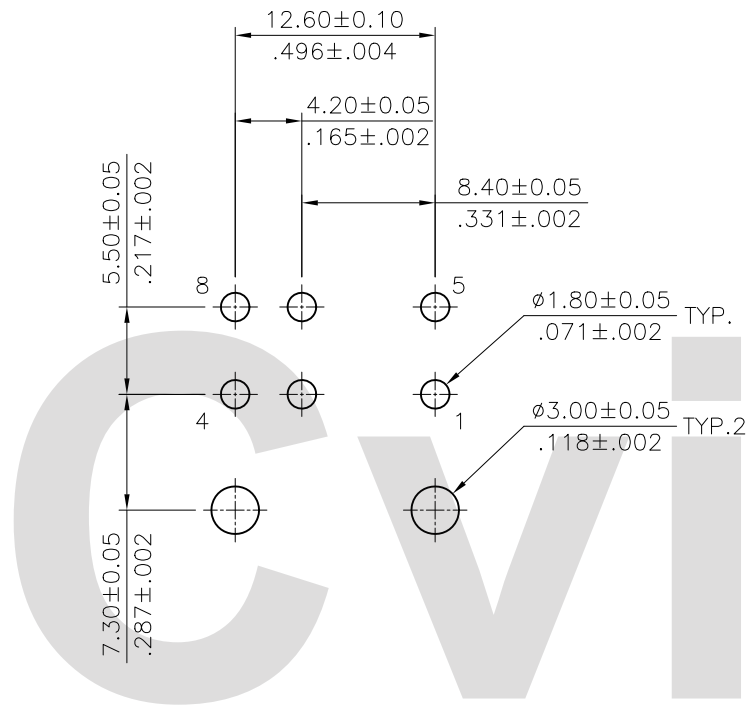
SEC. Y-Y



SEC. X-X

Tin-Lead Process
 RoHS Compliant

4					DATE	UNIT: mm / inch	TITLE: CP-014 SERIES BMI RIGHT ANGLE TYPE CONN.	瀚荃股份有限公司 CviLux Corporation		
3					DRAWN BY: Sun	TOLERANCE UNLESS OTHERWISE SPECIFIED	MATERIAL:			
2	Sun	4/03-15	ECRB115006/ECNT115077	DRAWN BY: Sun ENGINEER: Sun	4/3-15'	.X ± 0.38/.015	.X' ± 1'	DRAWING NO. CP01105SB	PART NO. CP-014081HA-PB	
1	Andy	11/12-13	ECNT113117		CHECKED BY: Eisley	4/7-15'	.XX ± 0.25/.010	.X' ±	CUSTOMER: TCF0276	SCALE 2 / 1
SYM	NAME	DATE	REVISIONS	APPROVED BY: Eisley	4/7-15'	.XXX ± 0.10/.004	.XX' ±			



Recommended P.C. Board layout


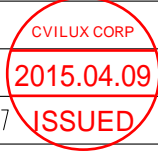
Ordering Code:

CP-01 4 08 1 H A -PB
 ① ② ③ ④ ⑤ ⑥ ⑦

- ① Series No.
- ② Type of Connector:
4= Right angle PCB mount header
- ③ No of Circuits:
- ④ Plating Code: 1= Tin over Nickel
- ⑤ Variation: H= UL 94V-2, BMI type
(Glow wire available)
- ⑥ Option: A= A Type
- ⑦ Option Code: PB= Omitted Pin No.2 & 6

Tin-Lead Process

RoHS Compliant

④						UNIT: mm / inch	TITLE: CP-014 SERIES BMI RIGHT ANGLE TYPE CONN.	 瀚荃股份有限公司 CviLux Corporation				
③						TOLERANCE UNLESS OTHERWISE SPECIFIED	MATERIAL:		DRAWING NO.	CP01105SB	PART NO.	CP-014081HA-PB
②	Sun	4/03-15'	ECRB115006/ECNT115077		DRAWN BY: Sun	4/3-15'	.X ± 0.38/.015	.X' ± 1'				
①	Andy	11/12-13'	ECNT113117		ENGINEER: Sun	4/3-15'	.XX ± 0.25/.010	.X' ±	CUSTOMER:			
SYM	NAME	DATE	REVISIONS		APPROVED BY: Eislely	4/7-15'	.XXX ± 0.10/.004	.XX' ±	TCF0276	SCALE	2 / 1	SHEET 2 OF 2