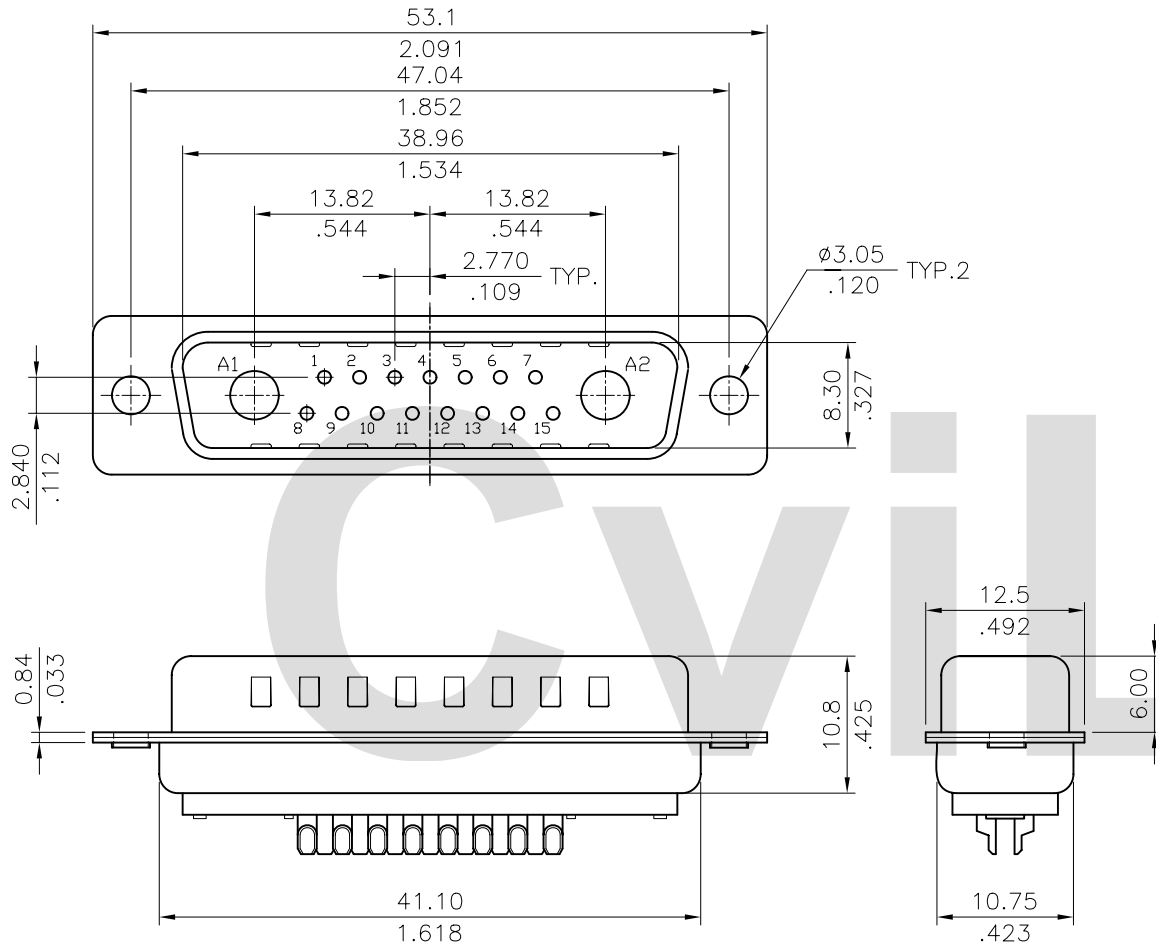


Material:

Insulator: Glass filled Polyester UL 94V-0

Contact: Copper alloy

Shell: Steel, Tin plated as standard



Ordering Code

$\frac{17W2}{①}$
 $\frac{P0}{②}$
 $\frac{S0}{③}$
 $\frac{A}{④}$
 $\frac{100}{⑤}$
 $\frac{000}{⑥}$

- ① Series No.
- ② Connector Type:
P0= Plug
- ③ Contact tail Style:
S0= Solder Cup type
- ④ Signal Contact Plating:
A= Selective Gold flash plated over Nickel
B= Selective 15 μ Gold plated over Nickel
C= Selective 30 μ Gold plated over Nickel
- ⑤ Insulator Color:
100= Black
600= Green
- ⑥ Mounting Style:
000= With ϕ 3.05mm holes on shell
A00= Riveted #4-40 UNC close nuts on front shell
B00= Riveted #4-40 UNC open nuts on front shell
C00= Riveted #4-40 UNC open nuts on rear shell

Mounting Style

RoHS Compliant

Code	000	Code	A00	Code	B00	Code	C00
			DIM. L= 5.8mm		DIM. L= 4.0mm		DIM. L= 4.0mm

④					DATE	UNIT: mm / inch	TITLE: 17W2 MALE COMBO D-SUB CONNECTOR (SOLDER CUP TYPE)	 瀚荃股份有限公司 CviLux Corporation	
③				DRAWN BY: James	11/18-02'	TOLERANCE UNLESS OTHERWISE SPECIFIED	MATERIAL:		
②				ENGINEER: David	11/19-02'	.X \pm 0.30/.012 .X' \pm 1'			
①				CHECKED BY: David	11/19-02'	.XX \pm 0.20/.008 .X' \pm	FINISH:		
SYM	NAME	DATE	REVISIONS	APPROVED BY: Alex	11/19-02'	.XXX \pm 0.10/.004 .XX' \pm	DRAWING NO. 17W201SC	PART NO. 17W2P0S0**00*00	
							SCALE	2 / 1	SHEET 1 OF 1

