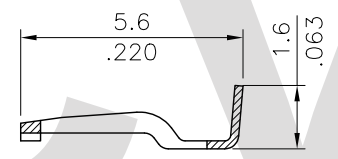
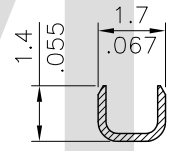


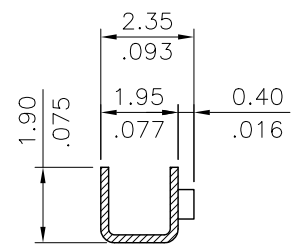
SEC.: A-A



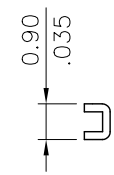
SEC.: B-B



SEC.: C-C



SEC.: D-D



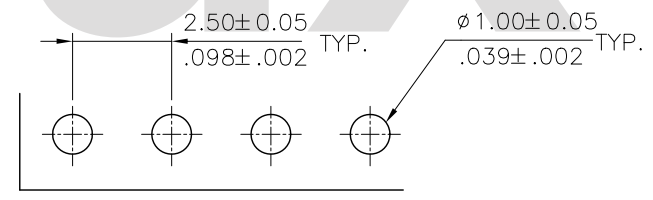
SEC.: E-E

Wire Range	Insulation Diameter	Reel Q'ty
AWG #22~#26	1.60 (.063) MAX.	7,000 PCS.

△ Ordering Code:


CI27 T02 1 P EH
① ② ③ ④ ⑤

- ① Series No.
- ② Type: T02 =AWG#22~#26
- ③ Plating: 1= 2.03μm(80μ") Min. Tin over 0.76μm(30μ") Nickel
- ④ Material: P= Phosphor Bronze
- ⑤ Other Options: EH= Right Angle Terminal



Recommended P.C. Board Layout

RoHS Compliant

SYM	NAME	DATE	REVISIONS	APPROVED BY:	DATE	UNIT: mm / inch	TITLE:	 瀚荃股份有限公司 CviLux Corporation
4						UNIT: mm / inch	BOARD IN TERMINAL	
3						TOLERANCE UNLESS OTHERWISE SPECIFIED	MATERIAL:	
2						.X ± 0.25 / .010 X' ± 1"	FINISH:	
1	Karen	6/19-12'	ECN12110-0/ECR12033-0	APPROVED BY: David	6/19-12'	.XX ± 0.15 / .006 X' ±		DRAWING NO. CI2704SB PART NO. CI27T021PEH
						.XXX ± 0.08 / .003 .XX' ±		SCALE 5 / 1 SHEET 1 OF 1

CVILUX CORP
 2012.06.29
 ISSUED