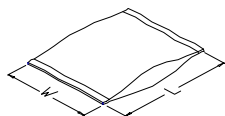


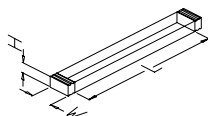
SERIES OR P/N	CIRCUITS	PACKING METHOD CODE	INNER PACKING NO.	INNER PACKING SIZE (CM)			INNER PACKING Q'TY	INSIDE CARTON NO.	INSIDE CARTON SIZE (CM)			PCS / INSIDE CARTON	CARTON NO.	CARTON SIZE (CM)			PCS / CARTON	G.W REF. (KG)
				D	W	H			L	W	H			L	W	H		
CF3504*D0R0-NH	4	D	PACK-CRCA64	33	1.6	-	3000					PACK-CTC012	35	35	29	33000	NA	
CF3505*D0R0-NH	5	D	PACK-CRCA65	33	1.6	-	3000					PACK-CTC012	35	35	29	33000	NA	
CF3506*D0R0-NH	6	D	PACK-CRCA66	33	1.6	-	3000					PACK-CTC012	35	35	29	33000	NA	
CF3507*D0R0-NH	7	D	PACK-CRCA67	33	1.6	-	3000					PACK-CTC012	35	35	29	33000	NA	
CF3508*D0R0-NH	8	D	PACK-CRCA68	33	1.6	-	3000					PACK-CTC012	35	35	29	33000	NA	
CF3509*D0R0-NH	9	D	PACK-CRCA69	33	1.6	-	3000					PACK-CTC012	35	35	29	33000	NA	
CF3510*D0R0-NH	10	D	PACK-CRCA70	33	1.6	-	3000					PACK-CTC012	35	35	29	33000	NA	
CF3511*D0R0-NH	11	D	PACK-CRCA71	33	1.6	-	3000					PACK-CTC012	35	35	29	33000	NA	
CF3512*D0R0-NH	12	D	PACK-CRCB189	33	2.4	-	3000					PACK-CTC012	35	35	29	27000	NA	
CF3513*D0R0-NH	13	D	PACK-CRCB190	33	2.4	-	3000					PACK-CTC012	35	35	29	27000	NA	
CF3514*D0R0-NH	14	D	PACK-CRCB191	33	2.4	-	3000					PACK-CTC012	35	35	29	27000	NA	
CF3515*D0R0-NH	15	D	PACK-CRCB192	33	2.4	-	3000					PACK-CTC012	35	35	29	27000	NA	
CF3516*D0R0-NH	16	D	PACK-CRCB193	33	2.4	-	3000					PACK-CTC012	35	35	29	27000	NA	
CF3517*D0R0-NH	17	D	PACK-CRCB194	33	2.4	-	3000					PACK-CTC012	35	35	29	27000	NA	
CF3518*D0R0-NH	18	D	PACK-CRCB195	33	2.4	-	3000					PACK-CTC012	35	35	29	27000	NA	
CF3519*D0R0-NH	19	D	PACK-CRCB196	33	2.4	-	3000					PACK-CTC012	35	35	29	27000	NA	
CF3520*D0R0-NH	20	D	PACK-CRCB197	33	2.4	-	3000					PACK-CTC012	35	35	29	27000	NA	
CF3521*D0R0-NH	21	D	PACK-CRCB198	33	2.4	-	3000					PACK-CTC012	35	35	29	27000	NA	
CF3522*D0R0-NH	22	D	PACK-CRCB199	33	2.4	-	3000					PACK-CTC012	35	35	29	27000	NA	
CF3523*D0R0-NH	23	D	PACK-CRCB200	33	2.4	-	3000					PACK-CTC012	35	35	29	27000	NA	
CF3524*D0R0-NH	24	D	PACK-CRCB201	33	2.4	-	3000					PACK-CTC012	35	35	29	27000	NA	
CF3525*D0R0-NH	25	D	PACK-CRCB202	33	2.4	-	3000					PACK-CTC012	35	35	29	27000	NA	
CF3526*D0R0-NH	26	D	PACK-CRCB203	33	2.4	-	3000					PACK-CTC012	35	35	29	27000	NA	
CF3527*D0R0-NH	27	D	PACK-CRCB204	33	2.4	-	3000					PACK-CTC012	35	35	29	27000	NA	
CF3528*D0R0-NH	28	D	PACK-CRCB205	33	2.4	-	3000					PACK-CTC012	35	35	29	27000	NA	
CF3529*D0R0-NH	29	D	PACK-CRCB206	33	2.4	-	3000					PACK-CTC012	35	35	29	27000	NA	
CF3530*D0R0-NH	30	D	PACK-CRCC94	33	3.2	-	3000					PACK-CTC012	35	35	29	21000	NA	

PACKING METHOD (包裝方式) :

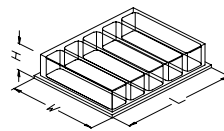
1 PVC BAG (塑膠袋)
SIZE = L * W



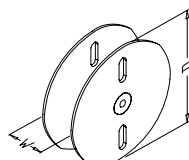
2 TUBE (塑膠管)
SIZE = L * W * H



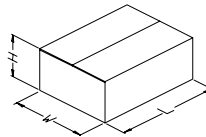
3 PVC TRAY (塑膠盒)
SIZE = L * W * H



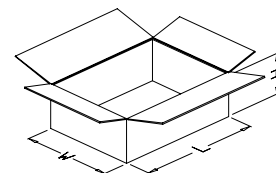
4 REEL (紙盤)
SIZE = D * W



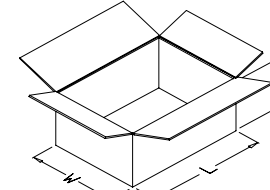
5 BOX (內紙盒)
SIZE = L * W * H



6 INSIDE CARTON (內箱)
SIZE = L * W * H



7 OUTSIDE CARTON (外箱)
SIZE = L * W * H



PACKING METHOD CODE (包裝方式代碼) :

- A = 1 → 7
- B = 2 → 7
- C = 3 → 7
- D = (4+1) → 7
- E = 5 → 7
- F = 1 → 6 → 7
- G = (2+1) → 6 → 7
- H = 3 → 6 → 7

文件履歷表

文件編號	CI15F351				
文件名稱	PACKING STANDARD				
內容變更敘述					
版本	新增				發行日期
1	簽呈編號：XQMS021400017				2014.08.26
核准	Jackal	審核	Mavis	製表	龔素珠
版本					發行日期
核准		審核		製表	
版本					發行日期
核准		審核		製表	
版本					發行日期
核准		審核		製表	
版本					發行日期
核准		審核		製表	
版本					發行日期
核准		審核		製表	
版本					發行日期
核准		審核		製表	
版本					發行日期
核准		審核		製表	
版本					發行日期
核准		審核		製表	