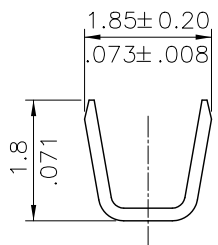
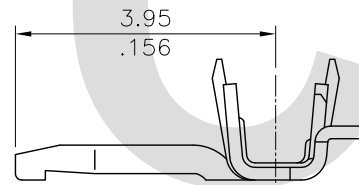


Wire Range	Insulation Diameter	Reel Q'ty
AWG #24~#28	1.45 (MAX.) (.057)	15,000 PCS.

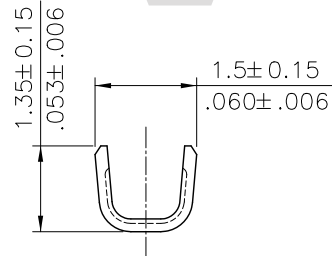
Ordering Code:

$\frac{CI02}{①}$ 
 $\frac{T02}{②}$ 
 $\frac{1}{③}$ 
 $\frac{*}{④}$ 
 $\frac{E}{⑤}$ 
 $\frac{H}{⑥}$

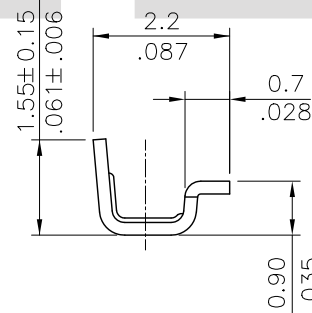
- ① Series No.
- ② Type: T02 =AWG #24~#28
- ③ Plating: 1= 2.54 $\mu$ m(100 $\mu$ ) Min. Tin over 0.76 $\mu$ m(30 $\mu$ ) Nickel
- ④ Material: B= Brass  
P= Phosphor Bronze
- ⑤ Plating method: E= Pre-tinned
- ⑥ Other Options: H= Right angle



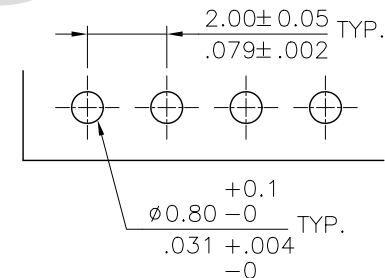
SEC. A-A



SEC. B-B



SEC. C-C



Recommended P.C. Board Layout

RoHS Compliant

				DATE	UNIT: mm / inch	TITLE: 2.00MM(.079") STRAIGHT BOARD IN TERMINAL  MATERIAL:  FINISH:	瀚荃股份有限公司 CviLux Corporation						
				DRAWN BY:	Enya						9/3-12'	TOLERANCE UNLESS OTHERWISE SPECIFIED	
				ENGINEER:	Eisley						9/4-12'	.X ± 0.20/.008	X' ± 1'
				CHECKED BY:	Eisley						9/4-12'	.XX ± 0.10/.004	.X' ±
APPROVED BY:	David	9/4-12'	.XXX ± 0.05/.002	.XX' ±	DRAWING NO.	CI0226SA	PART NO.	CI02T021*EH					
SYM	NAME	DATE	REVISIONS	APPROVED BY:	DATE	SCALE	5 / 1	SHEET	1 OF 1				