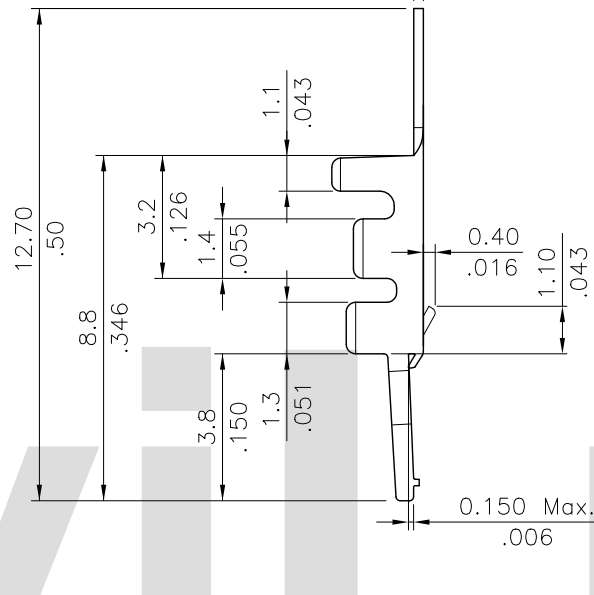
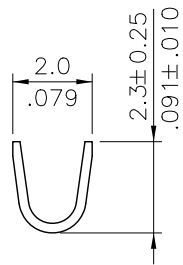


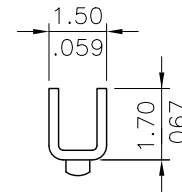
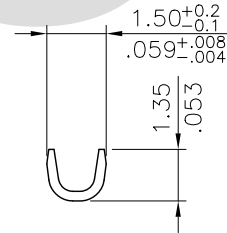
SEC.: A-A



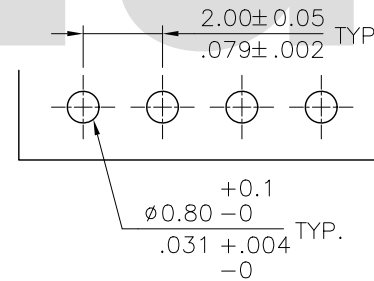
SEC.: C-C



SEC.: B-B



Recommended P.C. Board Layout




Wire Range	Insulation Diameter	Reel Q'ty
AWG #24~#28	1.40 (.055) MAX.	10,000 PCS.

Ordering Code:

CI02 T01 1 * E 0
 ① ② ③ ④ ⑤ ⑥

- ① Series No.
- ② Type: T01 = AWG#24~#28
- ③ Plating: 1= 2.03µm(80µ") Min. Tin over 0.76µm(30µ") Nickel
- ④ Material: B= Brass
P= Phosphor Bronze
- ⑤ Plating method: E= Pre-tinned
- ⑥ Other Options: 0= Standard

RoHS Compliant

4					DATE	UNIT: mm / inch	TITLE: 2.00MM(.079") STRAIGHT BOARD IN TERMINAL	 瀚荃股份有限公司 CviLux Corporation
3					DATE	TOLERANCE UNLESS OTHERWISE SPECIFIED	MATERIAL:	
2					DATE	.X ± 0.20/.008 .X* ± 1*	FINISH:	DRAWING NO. CI0225SA
1	Enya	9/4-12'	ECN12217-0/ECR12062-0	ENYA	9/4-12'	.XX ± 0.10/.004 .X* ±		SCALE 5 / 1
SYM	NAME	DATE	REVISIONS	APPROVED BY:	DATE	.XXX ± 0.05/.002 .XX* ±		SHEET 1 OF 1

