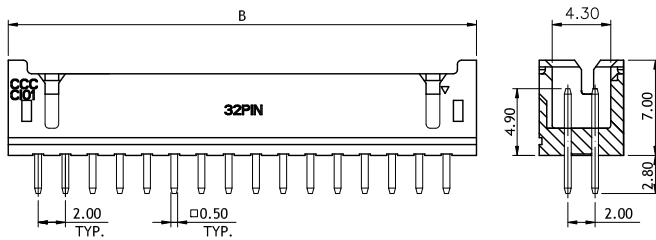
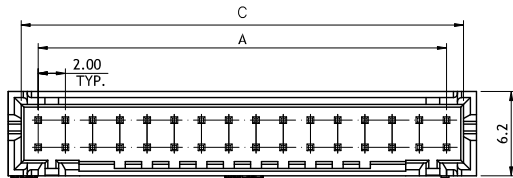


CI01 Series 2.00mm(.079") Dual Row Wire to Board Connectors DIP Headers

- ⊙ With locking slots
- ⊙ Mate with CI01 Dual Row Housing
- ⊙ Insulator: Polyamide UL 94V-0

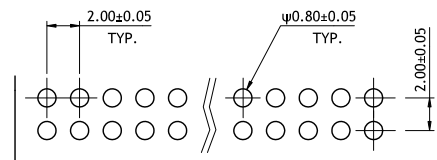
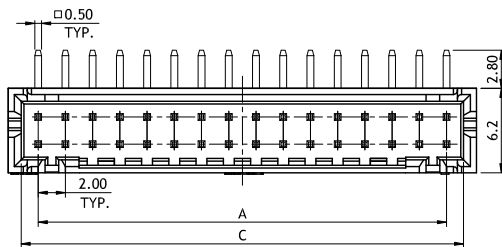


$$A = 2.0 \times (\text{No. of Circuits}/2-1)$$

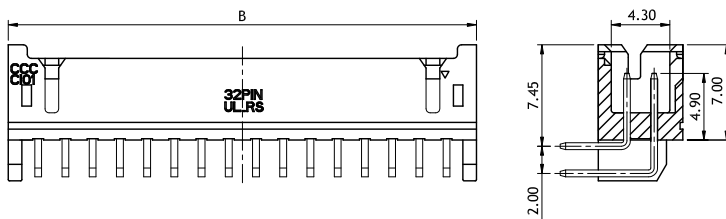
$$B = A + 4.4$$

$$C = A + 2.5$$

* Available in 6 through 34 circuits



Recommended P.C. Board Layout



Ordering Code:

CI01 ** P 1 V D H / -1
 ① ② ③ ④ ⑤ ⑥ ⑦ ⑧

- ① Series No.
- ② No. of Circuits
- ③ P= Pin Header
- ④ Plating: 1= Tin Plated over Nickel
- ⑤ Tail type: V= Straight
- ⑥ Option: D= Dual Row type
- ⑦ Other Option: H= Type of customer requirements
- ⑧ -1= Color Black
Blank= Color Nature

Ordering Code:

CI01 ** P 1 H D F / -1
 ① ② ③ ④ ⑤ ⑥ ⑦ ⑧

- ① Series No.
- ② No. of Circuits
- ③ P= Pin Header
- ④ Plating: 1= Tin Plated over Nickel
- ⑤ Tail type: H= Right Angle
- ⑥ Option: D= Dual Row type
- ⑦ Other Option: F= Type of customer requirements
- ⑧ -1= Color Black
Blank= Color Nature