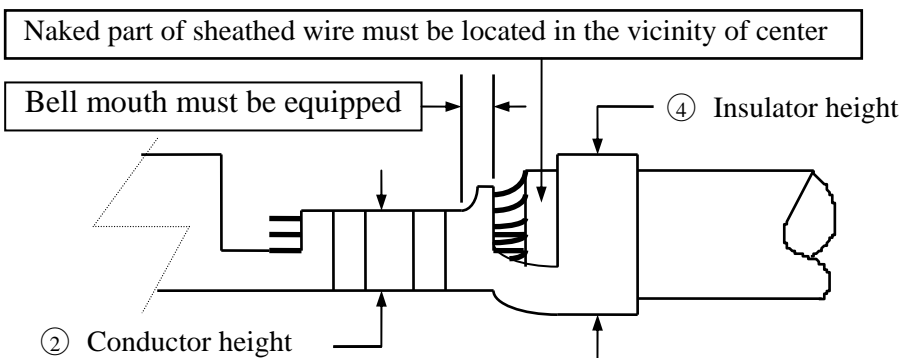
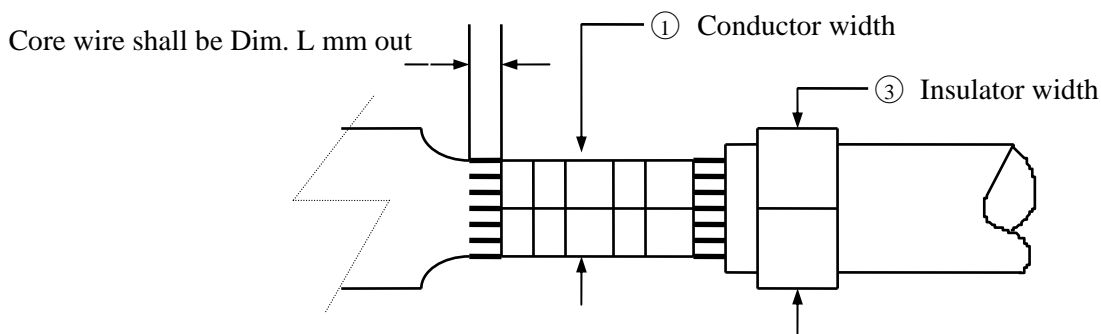


<b>ENGINEERING</b>	<b>CRIMP SPECIFICATION</b>	<b>SPEC. No.:SCCI033D</b>
<b>DEPT.</b>	<b>For CI15T01****0 TERMINAL</b>	<b>PAGE: 1 / 1</b>

1. Crimp height and width of crimped core should be set as required. (crimped height and width of wire barrel)
2. Crimp width of crimped sheath shall be adjusted according to the final out side diameter and the kind of electric wire, to the extent that sheathed wire won't be easily taken off from contact nor too much crimped. ( crimped width of insulation barrel)



Subject : UL 1007 or equivalent type electric wire

AWG #	Conductor mm <sup>2</sup>	Insulator Diameter	Applicator	Core crimp length	Dim. L
#26~#32	0.141 – 0.035	1.35 – 1.04mm	A01CI15T010	1.0 – 1.5 mm	0.2 – 0.4 mm

Wire Gage (AWG #)	Conductor Crimp Area		Insulator Crimp Area		Terminal Tensile Strength
	Width (1)	Height (2)	Width (3)	Height (4)	
#26	0.85 – 0.95	0.65 – 0.75	1.00 – 1.10	---	2.0 Kgf
#28		0.60 – 0.65		---	1.3 Kgf
#30		0.55 – 0.60		---	0.8 Kgf
#32		0.50 – 0.55		---	0.6 Kgf

DATE	REVISIONS	SPEC BY:	Ken
1/9-15'	ECNT115004	CHKD BY:	Sun
8/4-16'	ECNT116169	APPR BY:	Eisley

CIVILUX CORP  
 2016.08.11  
 ISSUED