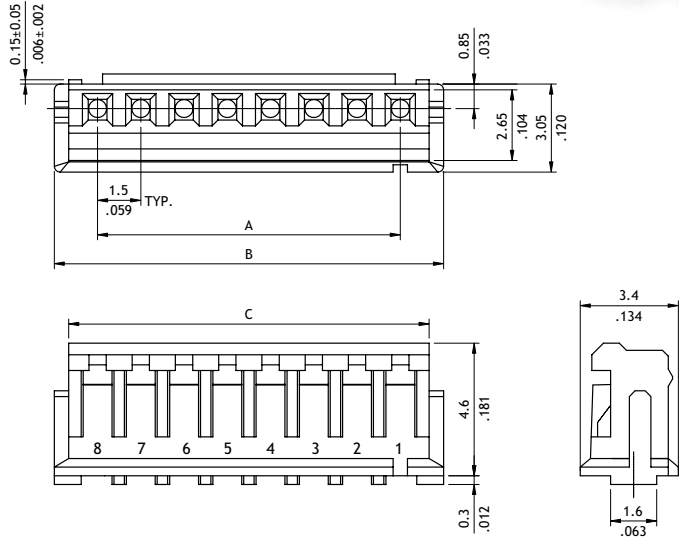
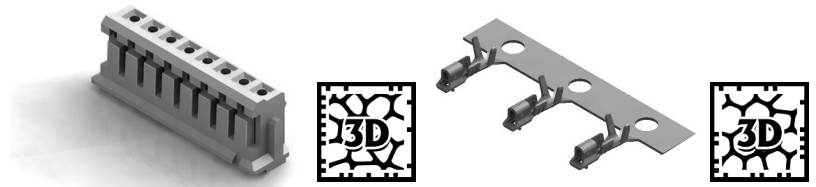
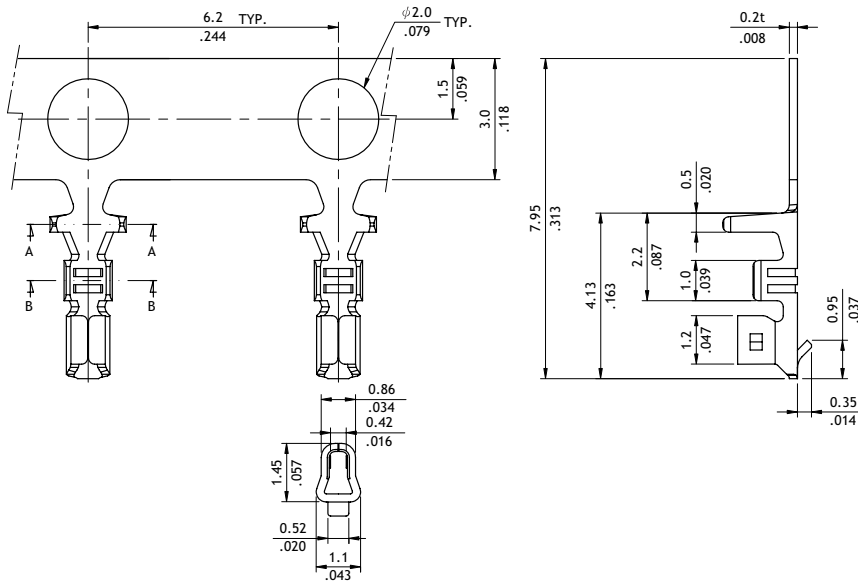


**CI15 Series 1.50mm(.059") Wire to Board Connectors Housing & Terminal**

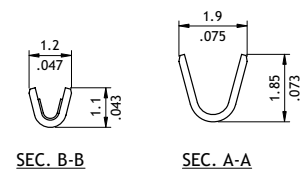
- Terminal accommodated AWG #26 ~ #32
- Insulator: Nylon 66 UL 94V-0, Color Nature
- Terminal: Tin plated, Phosphor Bronze
- Mate with CI15 Header



Circuits	Dimension		
	A	B	C
2	1.5(.059)	4.5(.177)	3.5(.138)
3	3.0(.118)	6.0(.236)	5.0(.197)
4	4.5(.177)	7.5(.295)	6.5(.256)
5	6.0(.236)	9.0(.354)	8.0(.315)
6	7.5(.295)	10.5(.413)	9.5(.374)
7	9.0(.354)	12.0(.472)	11.0(.433)
8	10.5(.413)	13.5(.513)	12.5(.492)
9	12.0(.472)	15.0(.591)	14.0(.551)
10	13.5(.531)	16.5(.650)	15.5(.610)
11	15.0(.591)	18.0(.709)	17.0(.669)
12	16.5(.650)	19.5(.768)	18.5(.728)
13	18.0(.709)	21.0(.872)	20.0(.787)
14	19.5(.768)	22.5(.886)	22.5(.886)
15	21.0(.827)	24.0(.945)	24.0(.945)



Wire Range	Insulation Diameter	Reel Qty
AWG #26-#32	1.35 (.053) MAX.	10,000 PCS



**Ordering Code**

**1** CI15 **2** 15 **3** S **4** 0000

- ① Series No.
- ② No. of Circuits: 02 to 15
- ③ S = Housing
- ④ Other Options:  
0000 = Standard

**1** CI15 **2** T01 **3** 1 **4** P **5** E **6** 0

- ① Series No.
- ② Type: T01 = AWG #26 ~ #32
- ③ Plating Code: 1 = Tin over Nickel
- ④ Material: P = Phosphor Bronze
- ⑤ Plating Method: E = Pre-tinned
- ⑥ Other Options: 0 = Standard