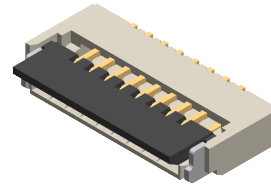


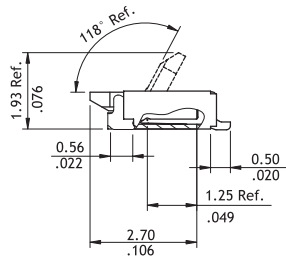
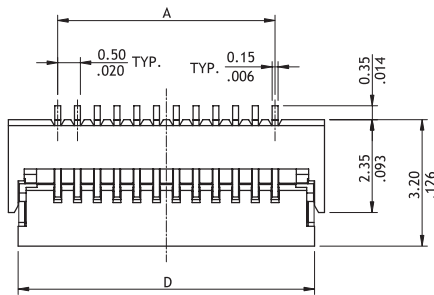
CF35 Series 0.50mm(.020")H=0.96 SMT ZIF One-Touch FFC/FPC Connectors

- 0.96mm above the board
- FFC/FPC zero insertion force and high retention force
- Insulation: High temperature plastic UL 94V-0, Color Nature
- Cover: High temperature plastic UL 94V-0, Color Black
- Actuator designed easy for FFC/FPC installation and reliable operation
- With metal fixed tabs to secure connector in place

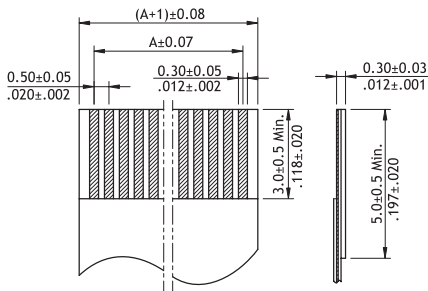
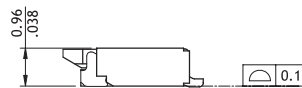
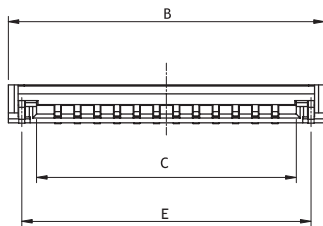
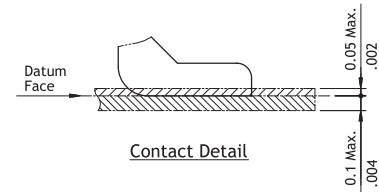
NEW



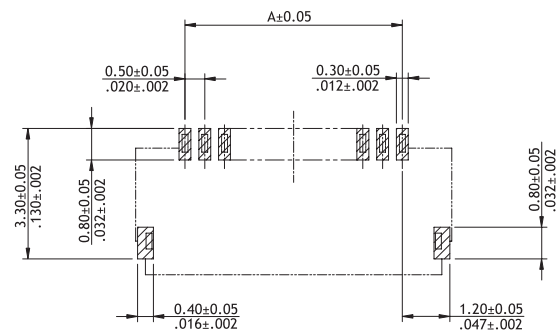
RoHS Compliant



- A = 0.5 x No. of Spaces
- B = A + 2.5
- C = A + 1.07
- D = A + 2.0
- E = A + 1.82



Accommodated FFC/FPC



Recommended P.C. Board Layout

Ordering Code

① CF 35 ② 1 2 ③ 2 ④ D ⑤ 0 ⑥ R ⑦ 0 - ⑧ NH

- ①** Series No.
- ②** No. of Circuits: 04 to 50 (Available: 12)
Circuits not found above please consult manufacturer
- ③** Plating Code:
2 = Gold flash over Nickel
- ④** Contact Style:
D = Downside Contact
- ⑤** Color: 0 = Nature
- ⑥** Packing:
R = Tape & Reel
- ⑦** Other Options:
0 = Standard
*Special option consult manufacturer
- ⑧** -NH = For Lead Free IR process and Halogen-Free