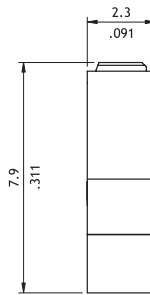
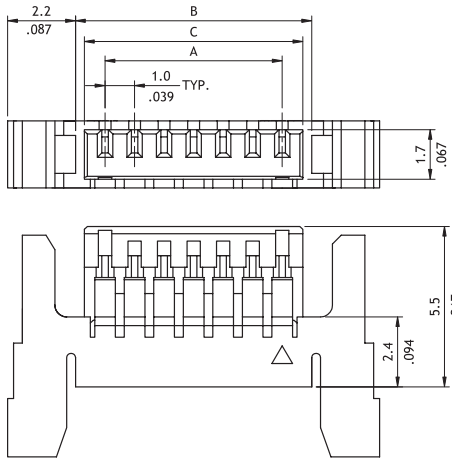
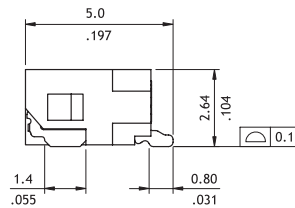
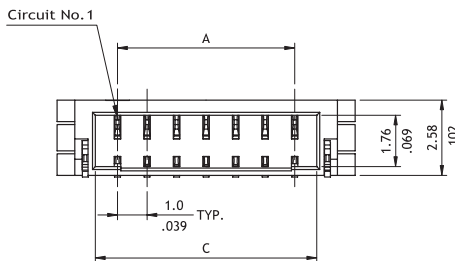
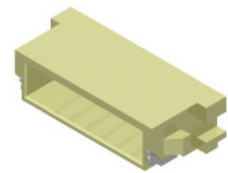
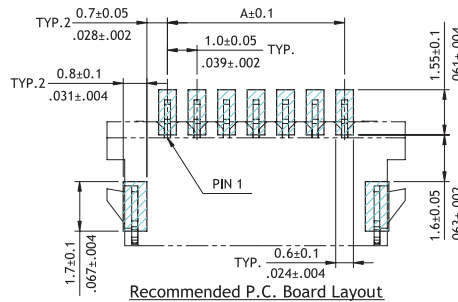
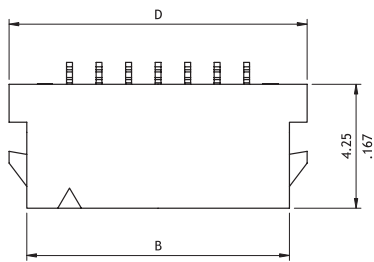
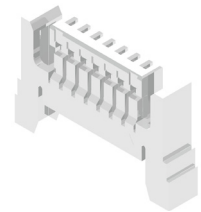


**CI14 Series 1.00mm(.039") Wire to Board Housing & SMT Side Entry Header**

- ⊙ Can be used CI14 crimp clip terminal
- ⊙ Insulator: High temperature plastic UL 94V-0, Color Nature
- ⊙ Insulator: Nylon 66 UL 94V-0, Color Nature
- ⊙ With locking latch provide secure mating



DIM.A = 1.0 x No. of Spaces  
 DIM.B = DIM.A + 2.0  
 DIM.C = DIM.A + 1.4



DIM.A = 1.00 x No. of Spaces  
 DIM.B = DIM.A + 2.90  
 DIM.C = DIM.A + 1.50  
 DIM.D = DIM.A + 4.10

**Ordering Code**

1 2 3 4 5 6 7 8  
**CI14 03 S L 00C - NH CI14 03 M 1 H R I - NH**

- ① Series No.
- ② No. of Circuits: 03 to 20
- ③ S = Housing
- ④ L = With Locking Latch
- ⑤ Other Options: 00C = Latch Type 2
- ⑥ -NH = Halogen-Free

- ① Series No.
- ② No. of Circuits: 03 to 20 pin
- ③ M = SMT Type
- ④ Plating Code: 1 = Matte Tin over Nickel
- ⑤ Type: H = Side Entry
- ⑥ Packing Options: R = Tape & Reel
- ⑦ Other Options: I = Dual Latch Type
- ⑧ -NH = For Lead Free IR process and Halogen-Free