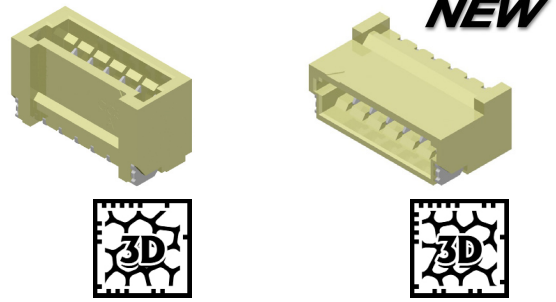
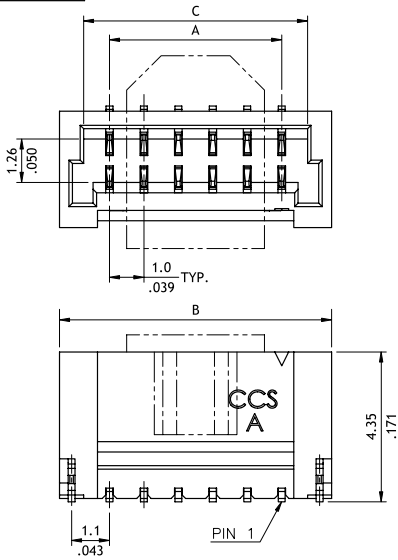


CI16 Series 1.00mm(.039") Wire to Board Connectors SMT Headers

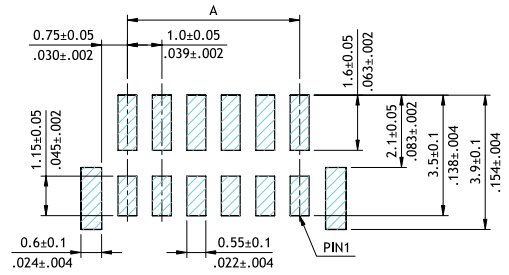
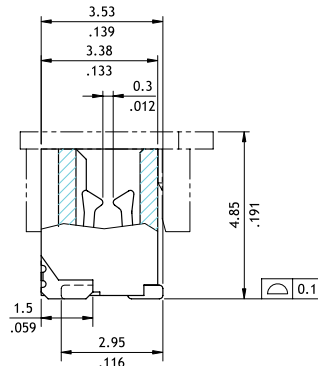
- ⊙ Fixed tabs provide PCB hold-down
- ⊙ Mate with CI16 housing
- ⊙ Insulator: High temperature plastic UL 94V-0, Color Nature
- ⊙ Terminal: Tin plated Phosphor Bronze



Top Entry

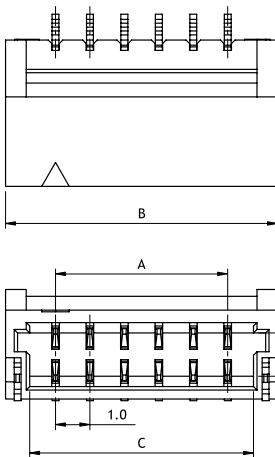


A = 1.00 x No. of Spaces
 B = A + 2.90
 C = A + 1.50

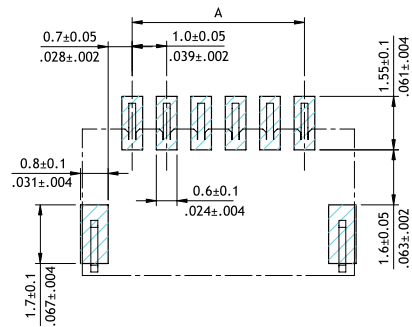
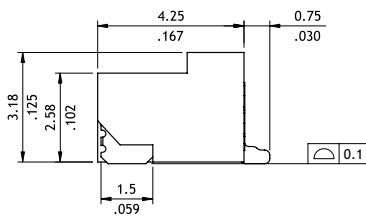


Recommended P.C. Board Layout

Side Entry



A = 1.00 x No. of Spaces
 B = A + 2.90
 C = A + 1.50



Recommended P.C. Board Layout

Ordering Code

1 **2** **3** **4** **5** **6** **7** **8**
CI 16 2 0 M 1 V R 0 - NH

- 1** Series No.
- 2** No. of Circuits: 02 to 20
- 3** M = SMT Type
- 4** Plating Code: 1 = Matte Tin over Nickel
- 5** Type: V = Top Entry
H = Side Entry
- 6** Packing Options: R = Tape & Reel
- 7** Other Option: 0 = Standard (Side Entry only)
A = Type 1 (Top Entry only)
- 8** -NH = For Lead Free IR Process and Halogen-Free