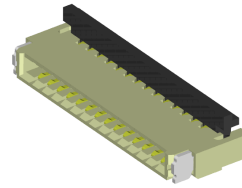


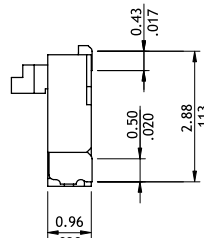
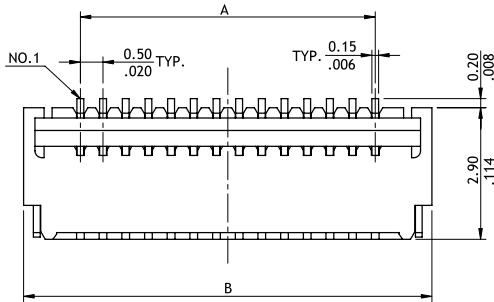
CF42 Series 0.50mm(.020")H=0.96 SMT ZIF FFC/FPC Connectors (Back Flip)

NEW

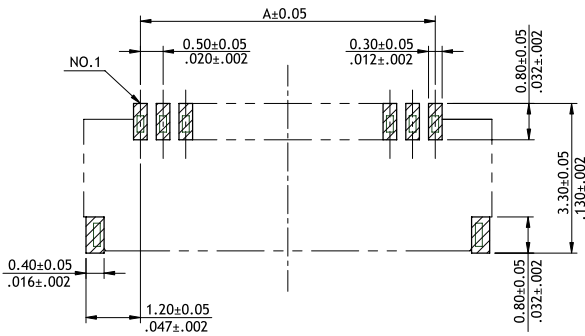
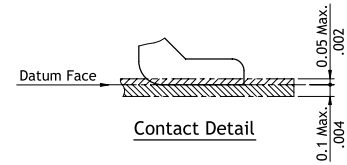
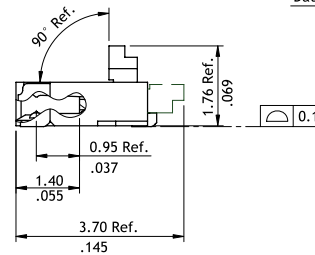
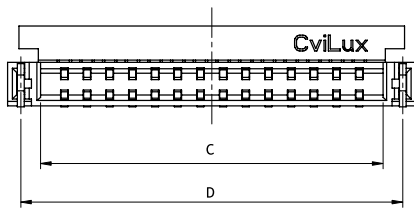


- ⊙ 0.96mm above the board
- ⊙ FFC/FPC zero insertion force and high retentions force
- ⊙ Insulator: High temperature plastic UL 94V-0, Color Nature
- ⊙ Cover: High temperature plastic UL 94V-0, Color Black
- ⊙ Designed easy for FFC/FPC installation and reliable operation
- ⊙ With metal fixed tabs to secure connector in place

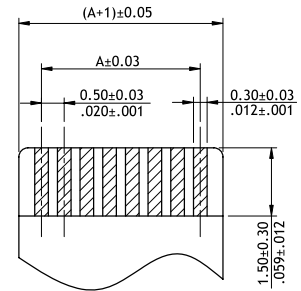
RoHS Compliant



A = 0.5 * No. of Spaces
 B = A + 2.5
 C = A + 1.05
 D = A + 1.92



Recommended P.C. Board Layout



Recommended FPC/FFC Dimension
 (Thickness: 0.3±0.03mm)

Ordering Code

① **CF42** **②** **20** **③** **FH0** **④** **R0** **⑤** **-** **⑥** **05** **⑦** **-** **⑧** **NH** **⑨**

- ①** Series No.
- ②** No. of Circuits: 04 to 40
 (Available: 4,6,8,9,10,12,15, 18,20,26,36)
 Circuits not found above please consult manufacturer
- ③** Plating Code:
 1 = Matte Tin over Nickel
 F = Gold flash over Nickel
- ④** Contact Style:
 H = Dual Side
- ⑤** Color: 0 = Nature
- ⑥** Packing:
 R = Tape & Reel
- ⑦** Other Options: 0 = Standard
- ⑧** Pitch: 05 = 0.50 mm
- ⑨** -NH = For Lead Free IR process and Halogen-Free