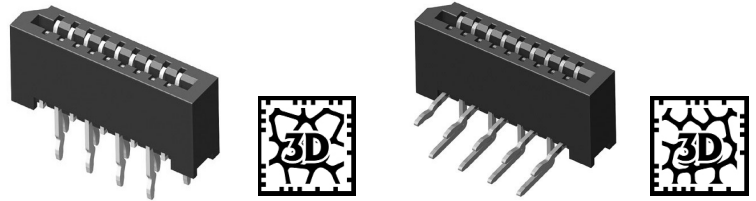


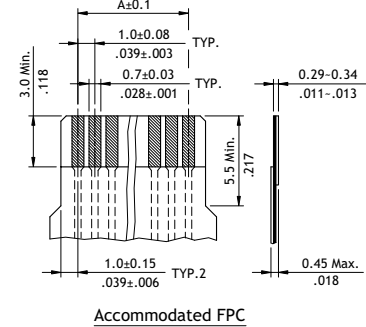
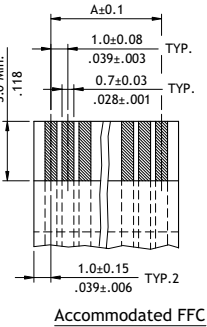
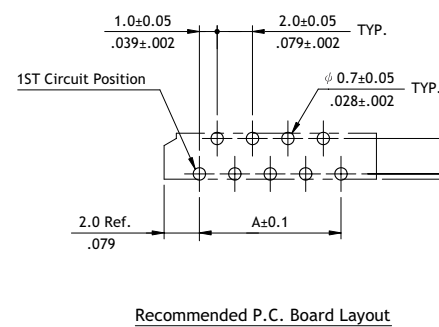
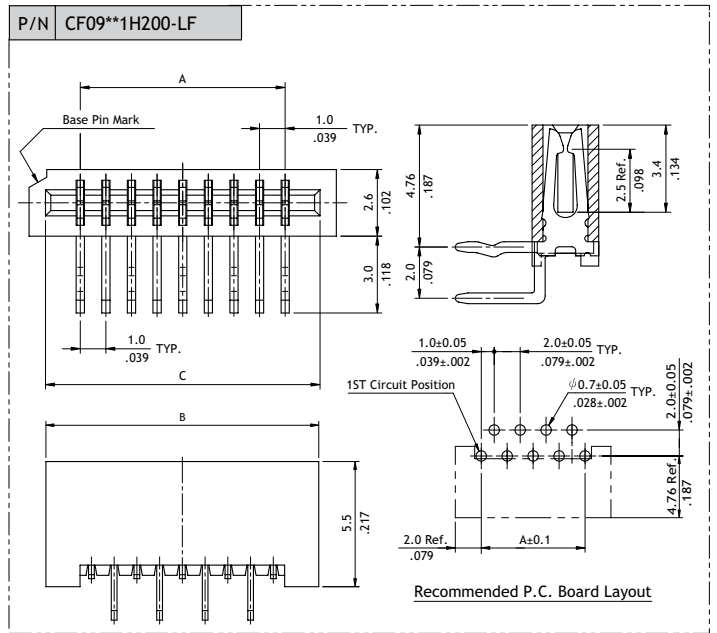
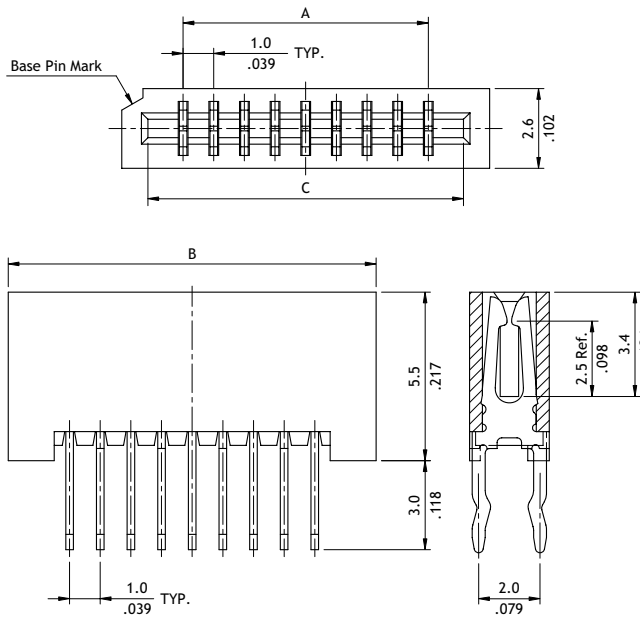
CF09 Series 1.00mm(.039")H=2.60/5.50 DIP LIF FFC/FPC Connectors

- Tin over copper alloy dual contacts
- Insulator: High temperature plastic UL 94V-0



P/N CF09**1V200-LF

A = 1.0 * No. of Spaces
 B = A + 4.0
 C = A + 2.1



Ordering Code

① CF09 **②** 32 **③** 1 **④** H **⑤** 2 **⑥** 00 - **⑦** LF

- ①** Series No.
- ②** No. of Circuits: 04 to 32
- ③** Plating Code:
1 = Matte Tin over Nickel
- ④** Contact Style:
V = Top Entry
H = Side Entry
- ⑤** Color: 1 = Black (NH)
2 = Brown (LF)
- ⑥** Other Options: 00 = Standard
*Special options consult manufacturer
- ⑦** -LF = For Lead Free soldering process
-NH = For Lead Free soldering process and Halogen-Free