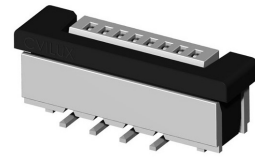
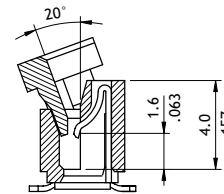
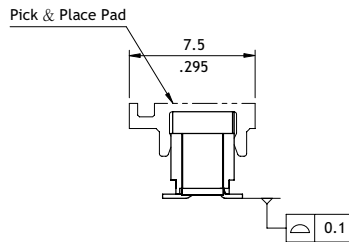
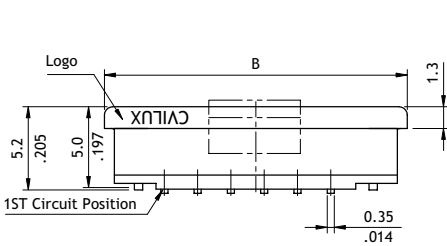
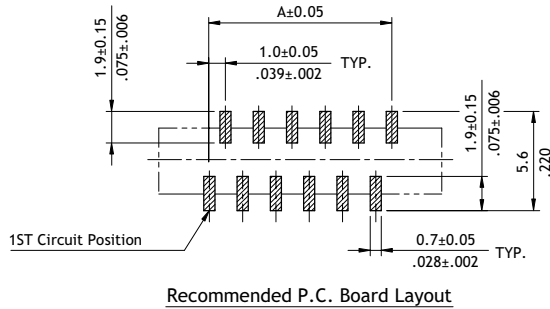
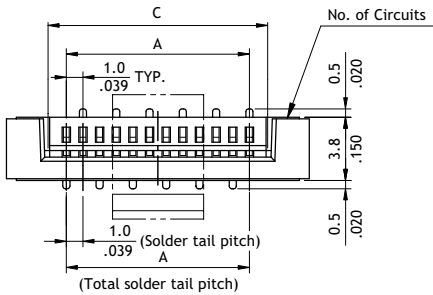


**CF10 Series 1.00mm(.039")H=5.20 SMT ZIF FFC/FPC Connectors**

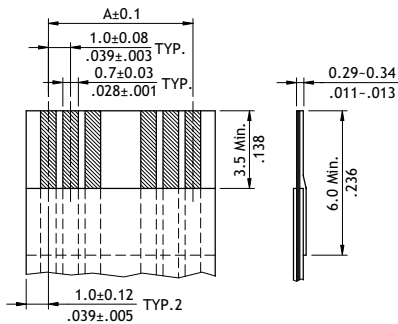
- ⊙ Insulator: High temperature plastic UL 94V-0, Color Nature
- ⊙ Slider: High temperature plastic UL 94V-0, Color Brown / Black



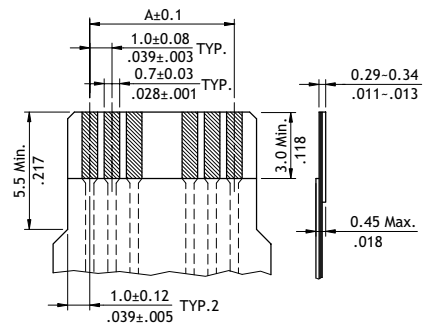
P/N CF10\*\*1M0\*0-NH



A = 1.0 x No. of Spaces  
 B = A + 7.2  
 C = A + 2.1



Accommodated FFC



Accommodated FPC

**Ordering Code**

**①** CF **②** 10 **③** 32 **④** 1 **⑤** V **⑥** 0 **⑦** T **⑧** 0 - NH

- ①** Series No.
- ②** No. of Circuits: 04 to 32
- ③** Plating Code: 1 = Matte Tin over Nickel
- ④** Contact Style: U = Upside Contact (DIP)  
 D = Downside Contact (DIP)  
 V = Vertical Type (DIP)  
 M = Top entry Type (SMT)
- ⑤** Color: 0 = Nature
- ⑥** Packing:  
 T = Tube packing without Pad (DIP or SMT)  
 R = Reel packing with Pad (SMT)
- ⑦** Other Options: 0 = Standard  
 \*Special options consult manufacturer
- ⑧** -LF = For Lead Free soldering process  
 -NH = For Lead Free soldering process and Halogen-Free