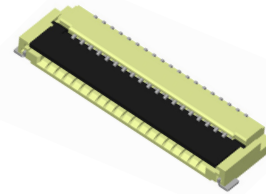
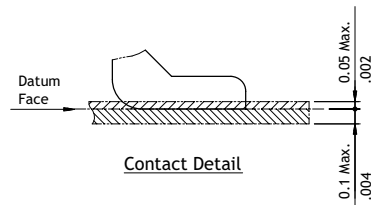
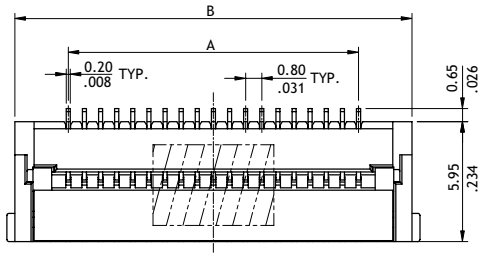


**CF32 Series 0.80mm(.031")H=1.95 SMT ZIF One-Touch FFC/FPC Connectors**

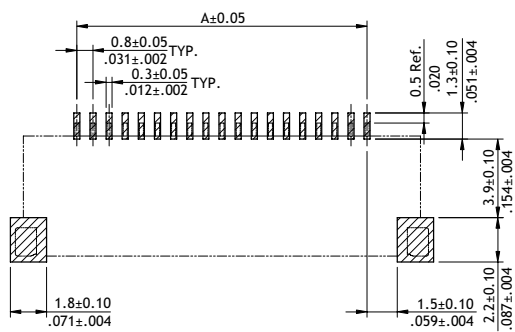
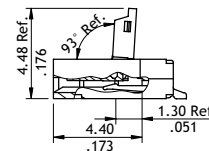
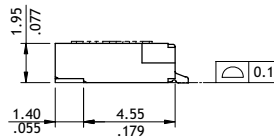
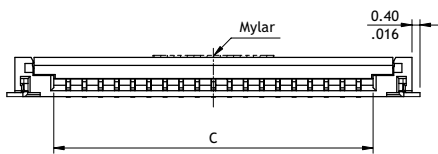
- 1.95mm above the board
- FFC/FPC zero insertion force and high holding force
- Insulation: High temperature plastic UL 94V-0, Color Nature
- Cover: High temperature plastic UL 94V-0, Color Black
- Actuator designed easy for FFC/FPC installation and reliable operation
- With metal fixed tabs to secure connector in place



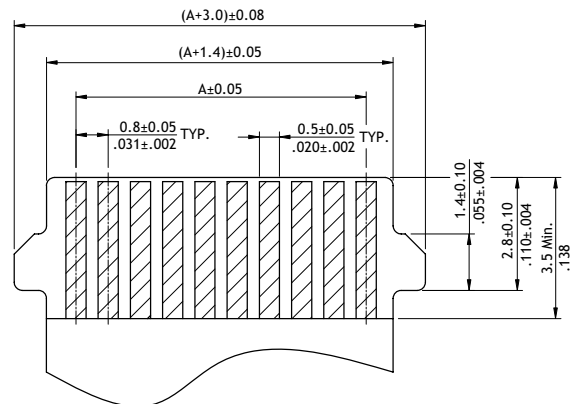
**RoHS** Compliant  



A = 0.8 x No. of Spaces  
 B = A + 5.3  
 C = A + 1.45



Recommended P.C. Board Layout



Recommended FPC/FFC Dimension  
 (Thickness: 0.3±0.03mm)

**Ordering Code**

**①** CF **②** 32 **③** 30 **④** 1 **⑤** D **⑥** 0 **⑦** R **⑧** 0 - NH

- ① Series No.
- ② No. of Circuits: 04 to 30  
(Available: 10,27,30)  
\*Circuits not found above please consult manufacturer\*

- ③ Plating Code:  
1 = Matte Tin over Nickel  
2 = Gold flash over Nickel
- ④ Contact Style:  
D = Downside contact
- ⑤ Color: 0 = Nature

- ⑥ Packing: R = Tape & Reel
- ⑦ Other Options: 0 = Standard  
M = With Mylar  
\*Special options consult manufacturer
- ⑧ -NH = For Lead Free IR process and Halogen-Free