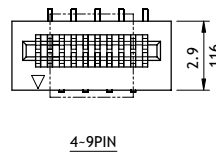
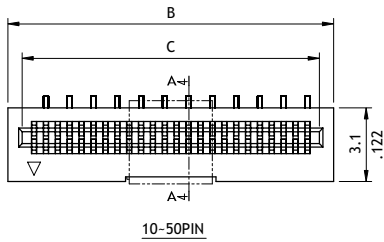
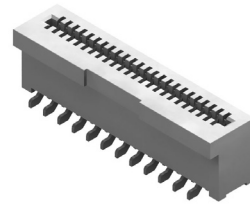
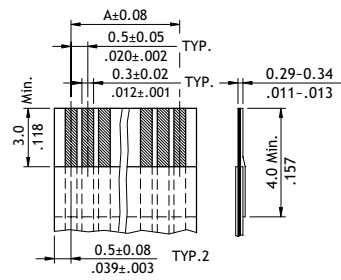
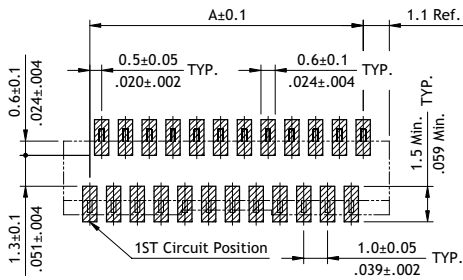
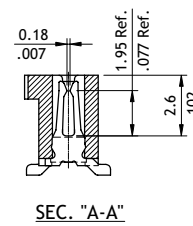
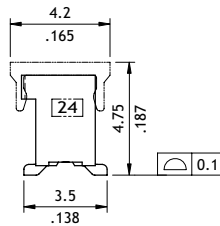
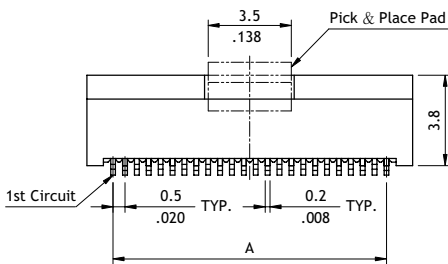


**CF24 Series 0.50mm(.020") H=4.20 SMT LIF Vertical FFC/FPC Connectors**

- ⊙ Tin plated over copper alloy dual contacts
- ⊙ Insulator: High temperature plastic UL 94V-0, Color Nature
- ⊙ Low insertion force



A = 0.5 x No. of Spaces  
 B = A + 2.2  
 C = A + 1.1



**Ordering Code**

①
②
③
④
⑤
⑥
⑦
⑧  
**CF24 50 1 V 0 R 0 - NH**

- |  |  |   |
|--|--|---|
| <p><b>①</b> Series No.</p> <p><b>②</b> No. of Circuits: 04 to 50</p> <p><b>③</b> Plating Code:<br/>1 = Matte Tin over Nickel</p> | <p><b>④</b> Contact Style:<br/>V = Vertical Type</p> <p><b>⑤</b> Color: 0 = Nature</p> <p><b>⑥</b> Packing:<br/>R = Tape &amp; Reel<br/>T = Tube</p> | <p><b>⑦</b> Other Options:<br/>0 = With pick &amp; place pad (Standard)<br/>N = Without pick &amp; place pad<br/>*Special options consult manufacturer</p> <p><b>⑧</b> -NH = For Lead Free soldering process and Halogen-Free</p> |
|--|--|---|