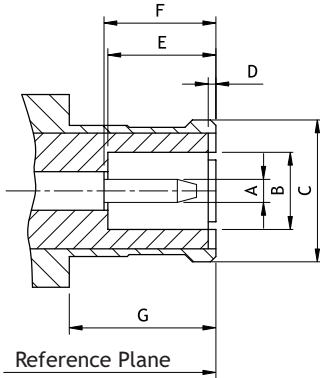


# CR03 Series MCX Subminiature snap-on Connectors

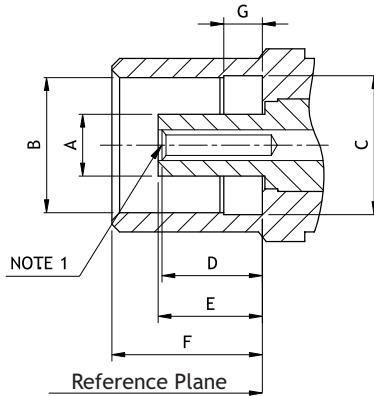
RoHS Compliant

## Interface Mating Dimensions



### PLUG

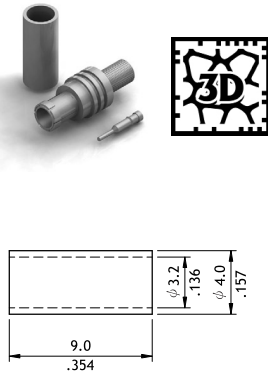
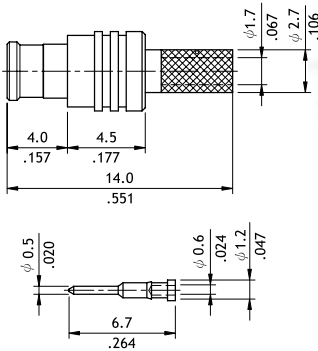
DIM.	Min.	Max.
A	0.48(.019)	0.53(.021)
B	2.00(.079)	2.07(.081)
C	3.63(.144)	3.76(.148)
D	0.00	0.30(.012)
E	2.81(.111)	3.20(.126)
F	2.80(.110)	3.20(.126)
G	4.15(.163)	-



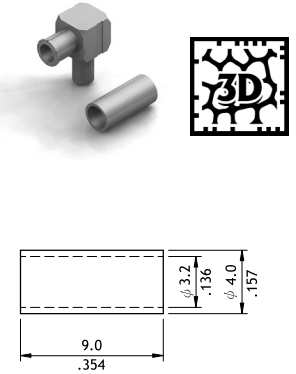
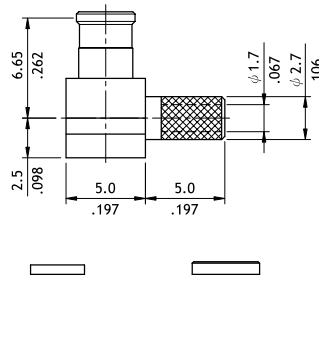
### JACK

DIM.	Min.	Max.
A	1.80(.071)	1.97(.078)
B	3.43(.135)	3.48(.137)
C	3.61(.142)	3.75(.147)
D	2.31(.091)	2.79(.110)
E	2.61(.103)	2.79(.110)
F	4.00(.157)	4.12(.162)
G	0.75(.030)	0.85(.033)

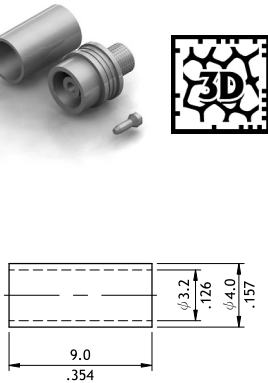
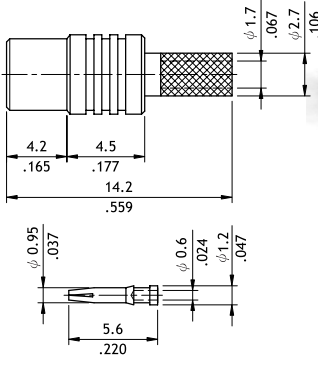
P/N CR03P01225000



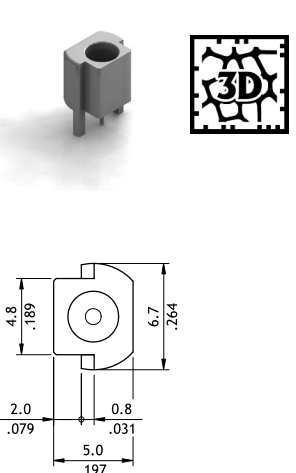
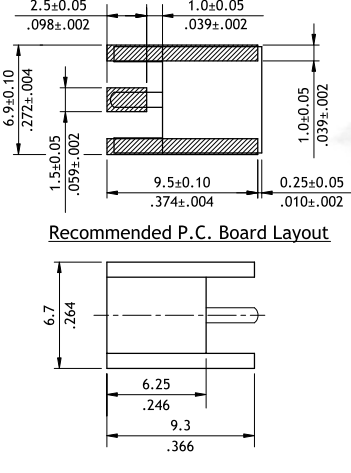
P/N CR03P02225000



P/N CR03S01225000



P/N CR03S06225000



## Ordering Code

① ② ③ ④ ⑤ ⑥ ⑦  
C R 0 3 P 0 1 2 2 5 0 0 0

① Series No.

② Type:

P = Plug (Male)

S = Jack (Female)

③ Contact Type:

01 = Straight, Cable Crimp

02 = Right Angle, Cable Crimp

06 = Side Entry, Cable Crimp

④ Body Plating:

2 = Gold Flash plated over Nickel

⑤ Contact Plating:

2 = Gold Flash plated over Nickel

⑥ Impedance: 5 = 50Ω

⑦ Other Options: 000 = Standard