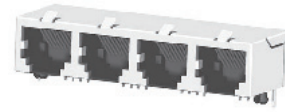
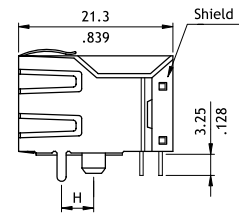
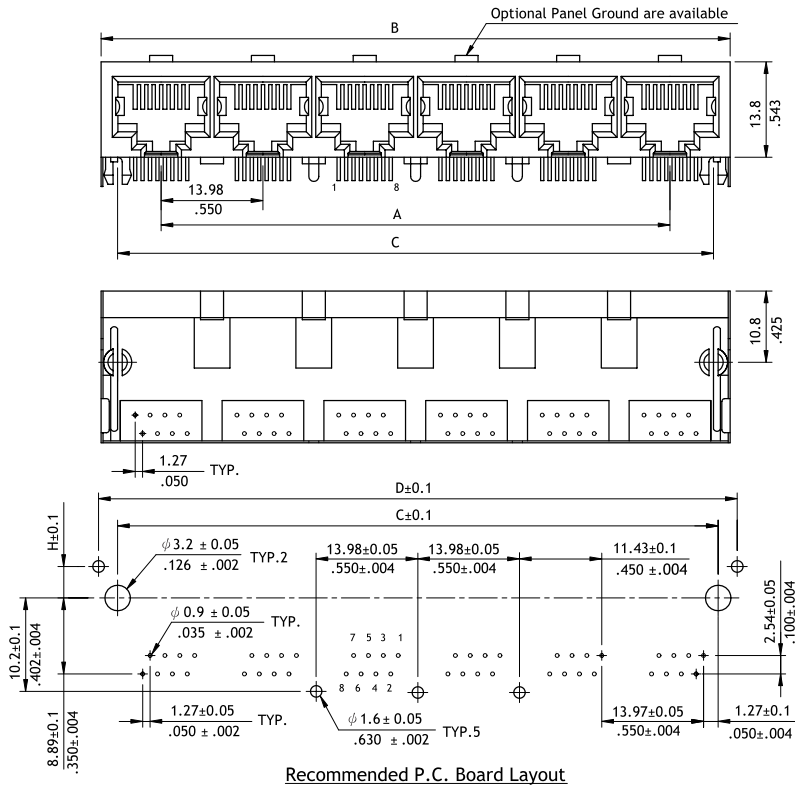


CJ48 Series Board Mount Telephone Jacks

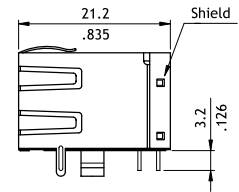
- Available in 1, 2, 4, 6 and 8 ports
- With metal shielding
- With metal grounding and PCB pegs
- Insulator: Black, Glass Filled polyester
- Flammability Rating: UL 94V-0
- Cavity confirms to FCC rules and regulations PART 68, SUBPART F



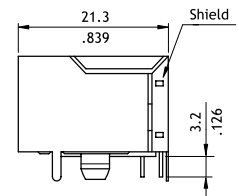
RoHS Compliant



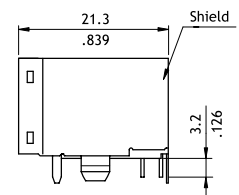
1 Port



2 Ports



4 Ports



6 and 8 Ports

CviLux P/N	Dimension				
	A	B	C	D	H
CJ4888211*A	-	-	-	-	4.57(.180)
CJ4888211*B	-	16.0(.630)	11.43(.450)	15.55(.612)	3.65(.144)
CJ4888211*C	-	-	-	-	3.05(.120)
CJ4888221*A	13.97(.550)	31.0(1.220)	25.4(1.000)	30.8(1.213)	4.57(.180)
CJ4888241*A	41.91(1.650)	59.1(2.327)	53.34(2.100)	58.9(2.319)	4.57(.180)
CJ4888261*A	69.85(2.750)	87.3(3.437)	81.30(3.201)	86.8(3.417)	4.57(.180)
CJ4888281*A	97.79(3.850)	114.8(4.520)	109.22(4.300)	114.6(4.512)	4.57(.180)

Ordering Code

1 **2** **3** **4** **5** **6** **7**
C J 4 8 8 8 2 8 1 0 A

- 1** Series No.
- 2** No. of Circuits: 88 = 8P8C
- 3** Plating Code:
2 = Gold flash over Nickel
*Optional plating available but MOQ requested
- 4** Ports: 1, 2, 4, 6 and 8
- 5** Insulator Color: 1 = Color Black
- 6** Panel Ground Code:
0 = Without Panel Ground
F = With Top & Left Right 3 Panel Ground (only 1 & 2 Ports)
H = Top Side With Long Panel Ground
P = Without Panel Ground, With Tabs (only 4 Ports)
- 7** Packing: A = 4.57mm, B = 3.65 (only 1 & 2 Ports)
C = 3.05 (only 1 & 2 Ports)
*Special options consult manufacturer