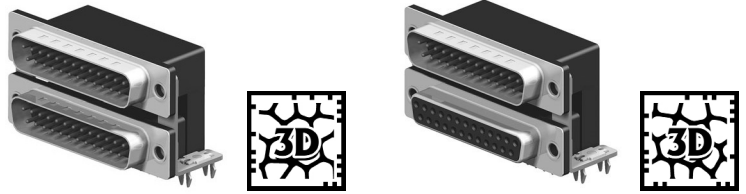
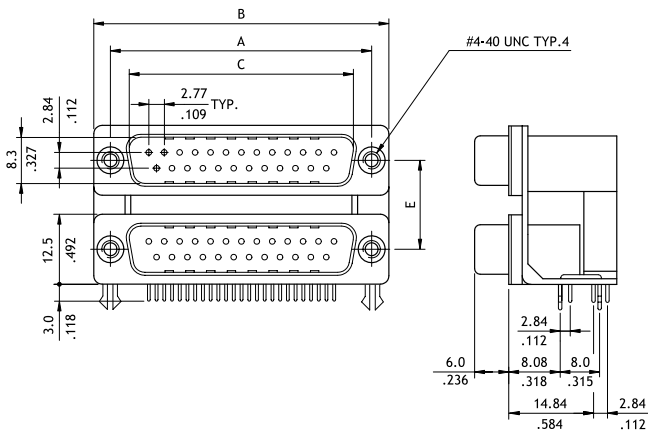


CD81 Series Stacked Right Angle DIP Solder D-Sub

- Mate with standard D-Sub
- With metal shell and solder tails
- Optional row spacing and position
- In various pin configuration

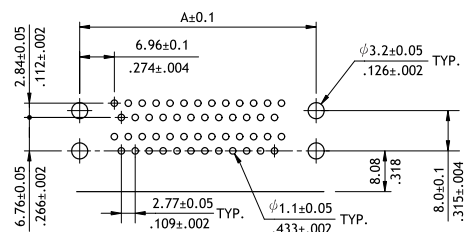
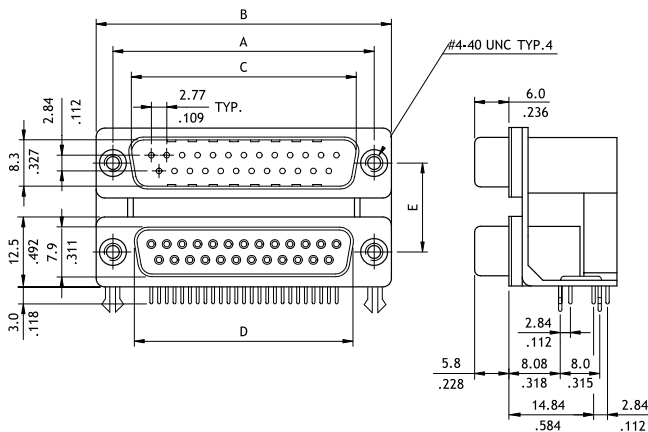


P/N CD81V*PPA**



CVILUX P/N	Dimension				
	A	B	C	D	E
CD81V1P**A*	25.0(.984)	30.8(1.213)	16.92(.666)	16.3(.642)	15.88(.625)
CD81V2P**A*	33.32(1.312)	39.2(1.543)	25.25(.994)	24.6(.969)	
CD81V3P**A*	47.04(1.852)	53.1(2.091)	38.96(1.534)	38.3(1.508)	
CD81V7P**A*	63.5(2.500)	69.4(2.732)	55.42(2.182)	54.8(2.157)	19.05(.750)
CD81V1P**B*	25.0(.984)	30.8(1.213)	16.92(.666)	16.3(.642)	
CD81V2P**B*	33.32(1.312)	39.2(1.543)	25.25(.994)	24.6(.969)	
CD81V3P**B*	47.04(1.852)	53.1(2.091)	38.96(1.534)	38.3(1.508)	22.86(.900)
CD81V7P**B*	63.5(2.500)	69.4(2.732)	55.42(2.182)	54.8(2.157)	
CD81V1P**C*	25.0(.984)	30.8(1.213)	16.92(.666)	16.3(.642)	
CD81V2P**C*	33.32(1.312)	39.2(1.543)	25.25(.994)	24.6(.969)	22.86(.900)
CD81V3P**C*	47.04(1.852)	53.1(2.091)	38.96(1.534)	38.30(1.508)	
CD81V7P**C*	63.5(2.500)	69.4(2.732)	55.42(2.182)	54.8(2.157)	

P/N CD81V*PSA**



Recommended P.C. Board Layout

Ordering Code

① CD ② 81 ③ V1 ④ PP ⑤ AA ⑥ C

- ① Series No.
- ② Contacts configuration:
 V1 = 9 to 9, V2 = 15 to 15
 V3 = 25 to 25, V4 = 9 to 25
 V5 = 25 to 9, V6 = 25 to 15
 V7 = 37 to 37
- ③ Connector Type: PP = Plug to plug
 PS = Plug to receptacle
- ④ Plating Options: A = Selective Gold flash over Nickel
 *Optional plating available but MOQ requested
- ⑤ Insulator Color: A: DIM.E = 15.88mm, B: DIM.E = 19.05mm
 C: DIM.E = 22.86mm
- ⑥ Other Options:
 C = Riveted ground hooks with #4-40 UNC open (Standard)
 S = Riveted ground hooks pre-loaded #4-40 UNC Hex screws
 *Special options consult manufacturer