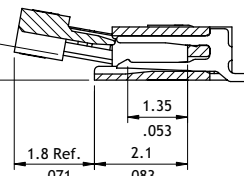
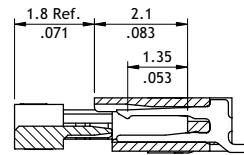
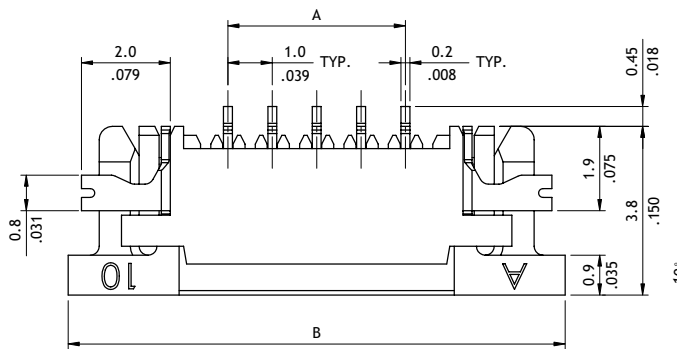
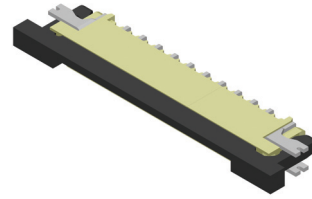
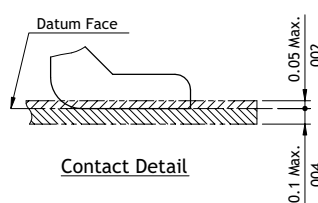
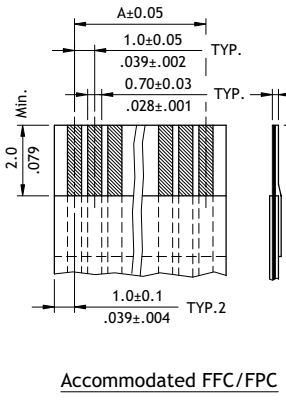
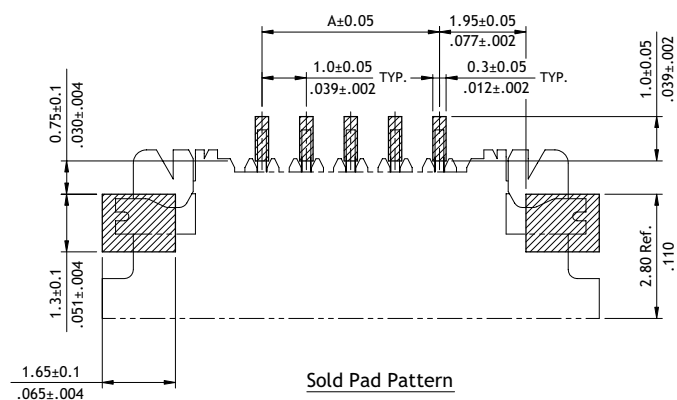
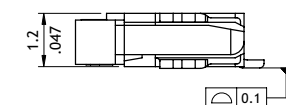
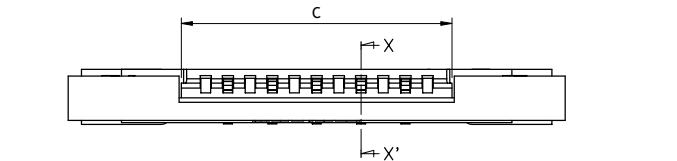
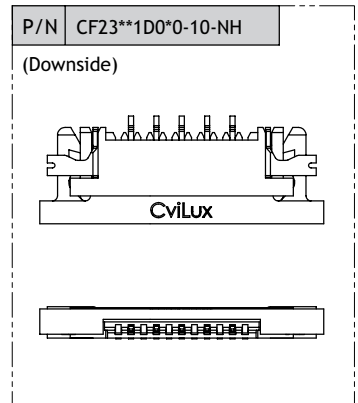


CF23 Series 1.00mm(.039") H=1.20 SMT ZIF FFC/FPC Connectors

- ⊙ 1.2mm above the board
- ⊙ Insulator: High temperature plastic UL 94V-0, Color Nature
- ⊙ Slider: High temperature plastic UL 94V-0, Color Black
- ⊙ Fully checked by CCD and Hi-Pot test
- ⊙ With metal fixed tabs to secure connector in place



A = 1.0 * No. of Spaces
 B = A + 7.2
 C = A + 2.1



Ordering Code

① CF **②** 23 **③** 16 **④** 1 **⑤** U **⑥** 0 **⑦** R **⑧** 0 - **⑨** 10 - NH

- ①** Series No.
- ②** No. of Circuits: 03 to 19
(Available: 3,4,6,7,8,10,12,16)
Circuits not found above please consult manufacturer
- ③** Plating Code:
1 = Matte Tin over Nickel
- ④** Contact Style:
U = Upside Contact
D = Downside Contact
- ⑤** Color: 0 = Nature
- ⑥** Packing:
R = Tape & Reel
T = Tube
- ⑦** Other Options:
0 = Standard
* Special options consult manufacturer
- ⑧** Pitch: 10 = 1.00 mm
- ⑨** Process:
-NH = For Lead Free soldering process and Halogen-Free