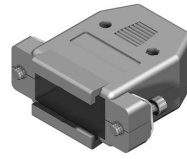


CD42/44 Series Plastic Hood

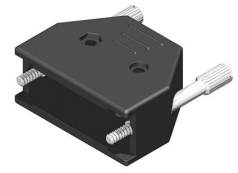
Hood Introduction

- Low cost and easy to use for various cable assemblies
- Accept standard D-SUB or High Density D-SUB connector
- Optional cable clamps and hardware options
- Color code option "*"
- 1 = Black, 9 = Grey, 0 = Ivory, M = Metalized, D = Die-cast

RoHS Compliant



CD42 Series



CD44 Series



CD42 Series Plastic Hood

<p>P/N CD4209H0*00</p>	<p>P/N CD4215H0*00</p>	<p>P/N CDHWE102S00</p>														
<p>P/N CD4225H0*00</p>	<p>P/N CD4237H0*00</p>	<table border="1"> <tr> <td>P/N CDHW0004W00</td> <td>P/N CDHWE101N00</td> </tr> <tr> <td></td> <td></td> </tr> </table> <table border="1"> <thead> <tr> <th>Circuits</th> <th>Screw length</th> </tr> </thead> <tbody> <tr> <td>9</td> <td>A= 8.7mm, 14.3mm</td> </tr> <tr> <td>15</td> <td>A= 8.7mm, 14.3mm</td> </tr> <tr> <td>25</td> <td>A= 8.7mm, 14.3mm</td> </tr> <tr> <td>37</td> <td>A= 13.0mm, 17.0mm</td> </tr> </tbody> </table>	P/N CDHW0004W00	P/N CDHWE101N00			Circuits	Screw length	9	A= 8.7mm, 14.3mm	15	A= 8.7mm, 14.3mm	25	A= 8.7mm, 14.3mm	37	A= 13.0mm, 17.0mm
P/N CDHW0004W00	P/N CDHWE101N00															
Circuits	Screw length															
9	A= 8.7mm, 14.3mm															
15	A= 8.7mm, 14.3mm															
25	A= 8.7mm, 14.3mm															
37	A= 13.0mm, 17.0mm															

CD44 Series Plastic Hood

<p>P/N CD4409H0*00</p>	<p>P/N CD4415H0*00</p>	<p>P/N CDHWE104S00</p>
<p>P/N CD4425H0*00</p>	<p>P/N CD4437H0*00</p>	<p>P/N CD4450H0*00</p>