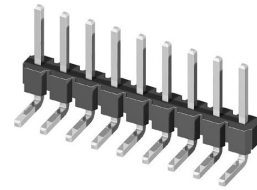
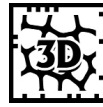
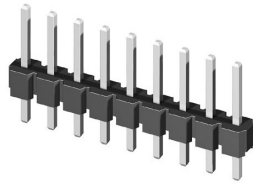


**CH31 Series 2.54mm(.100") Single Row Pin Headers**

☉ Mate with CB33 , CB37 and CB39 series

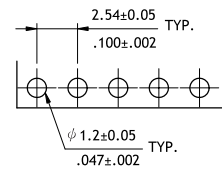
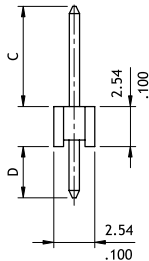
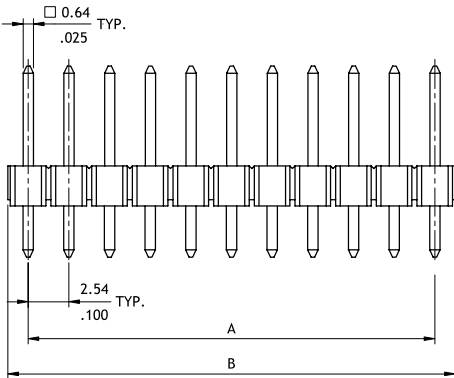


P/N CH31\*\*2VA00-NH



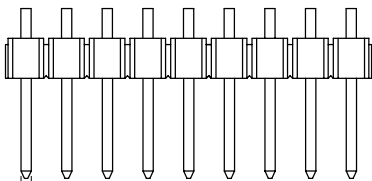
A = 2.54 x No. of Spaces  
B = A + 2.36  
Pin overall length 30.0mm max.

Option Code	Pin Dimension	
	C	D
00	6.0(.236)	3.0(.118)
01	6.26(.246)	3.0(.118)
02	5.86(.231)	3.0(.118)
03	8.86(.349)	3.0(.118)



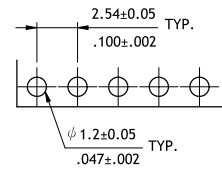
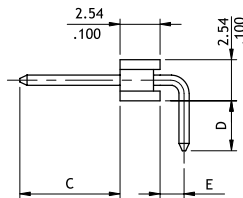
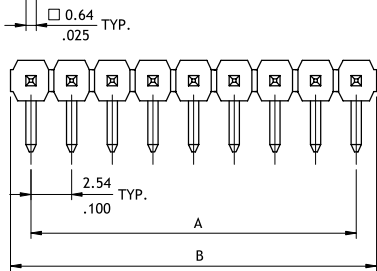
Recommended P.C. Board Layout

P/N CH31\*\*2HA00-NH



A = 2.54 x No. of Spaces  
B = A + 2.36

Option Code	Pin Dimension		
	C	D	E
00	6.00(.236)	3.0(.118)	1.5(.059)
01	6.26(.246)	3.0(.118)	1.5(.059)
02	5.86(.231)	3.0(.118)	1.5(.059)
03	8.30(.327)	3.0(.118)	1.5(.059)
04	7.26(.286)	3.0(.118)	1.5(.059)



Recommended P.C. Board Layout

**Ordering Code**

**① CH ② 3 ③ 1 ④ 4 ⑤ 0 ⑥ 2 ⑦ V ⑧ A ⑨ 0 ⑩ 0 - ⑪ NH**

- ① Series No.
- ② No. of Circuits: 01 to 40
- ③ Plating Code:  
2 = Gold flash over Nickel
- ④ Tail: V = Straight DIP Type  
H = Right Angle DIP Type
- ⑤ Insulator Material & Color:  
A = Nylon 6T UL 94V-0, Color Black
- ⑥ Other Options: 00 = Standard  
\*See option code tables  
\*Consult manufacturer for customized pin length
- ⑦ -NH = For Lead Free soldering process and Halogen-Free

CH

PIN HEADER CONNECTORS