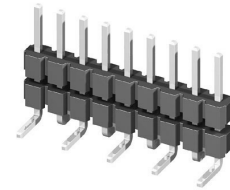
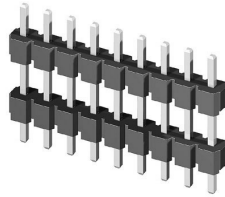
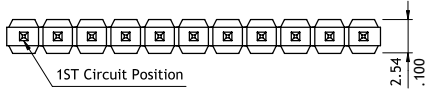


CH34 Series 2.54mm(.100") Single Row Dual Bodies Pin Headers

☉ Mate with CB33, CB37 and CB39 series

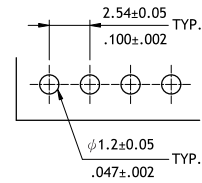
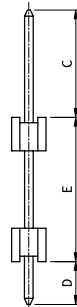
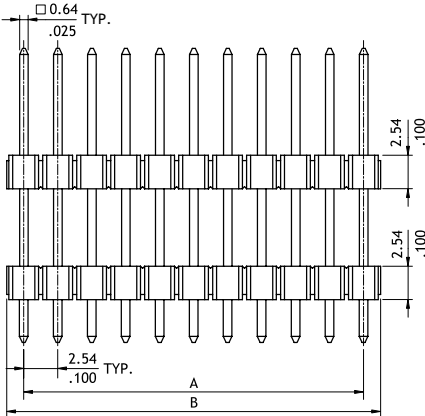


P/N CH34**2VA00-NH



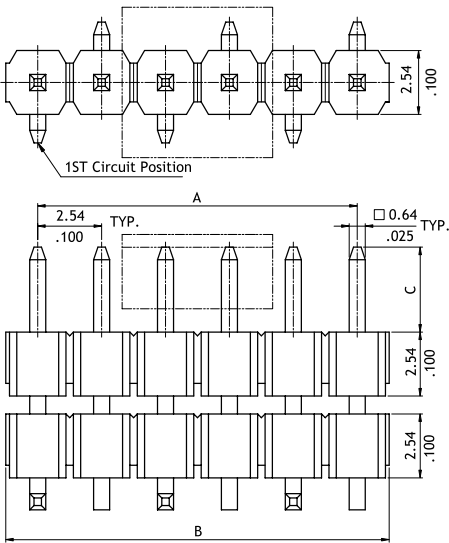
A = 2.54 x No. of Spaces
B = A + 2.36
Pin overall length 30.0mm max.

Option Code	Pin Dimension		
	C	D	E
00	10.30(.406)	3.20(.126)	12.00(.472)
01	3.15(.124)	3.15(.124)	9.00(.354)
02	3.40(.134)	3.00(.118)	9.60(.378)
03	7.00(.276)	3.00(.118)	18.00(.709)
04	3.00(.118)	3.00(.118)	6.00(.236)



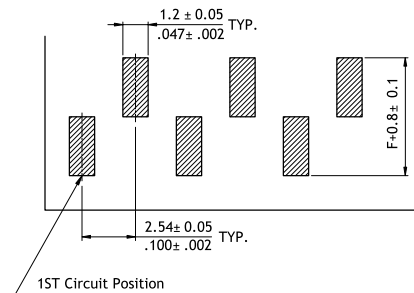
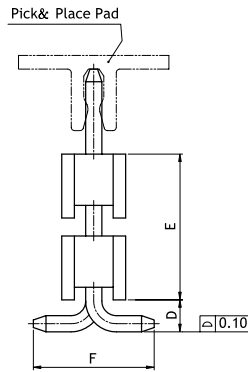
Recommended P.C. Board Layout

P/N CH34**2M100-**-NH



A = 2.54 x No. of Spaces
B = A + 2.36

Option Code	Pin Dimension			
	C	D	E	F
00	6.0(.236)	1.27(.050)	5.08(.200)	4.8(.189)



Recommended P.C. Board Layout

Ordering Code

① CH **②** 34 **③** 40 **④** 2 **⑤** M **⑥** 100 - **⑦** 00 - **⑧** NH

- ①** Series No.
- ②** No. of Circuits: 02 to 40
- ③** Plating Code: 2 = Gold flash over Nickel
- ④** Tail & Mounting Style: V = Straight DIP Type
M = Straight SMT Type
- ⑤** Insulator Color:
1 = Nylon 6T, Color Black (SMT)
A = Nylon 6T, Color Black (DIP)
- ⑥** Other Options: 00 = Standard
*See option code table
*Consult manufacturer for customized pin length
- ⑦** Packing:
00 = Without Pick & Place Pad (Tube)
0P = With Pick & Place Pad (Tape & Reel)
*Code 7 for SMT Type only
- ⑧** -NH = For Lead Free soldering process and Halogen-Free