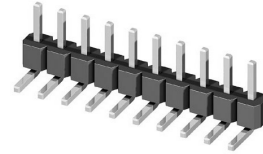
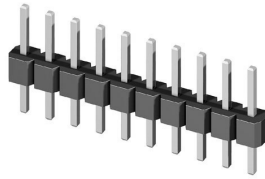
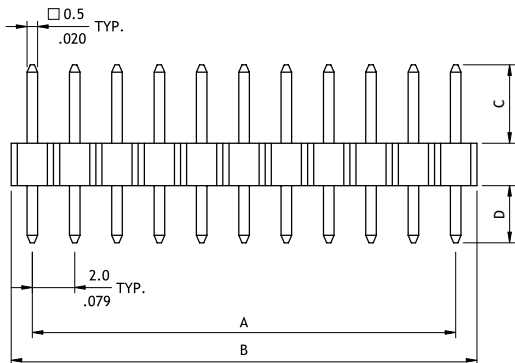


CH11 Series 2.00mm(.079") Single Row Pin Headers

☉ Mate with CB22 series

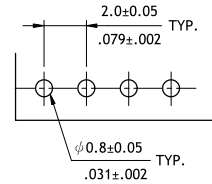
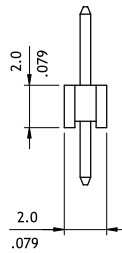


P/N CH11**2VA00-NH



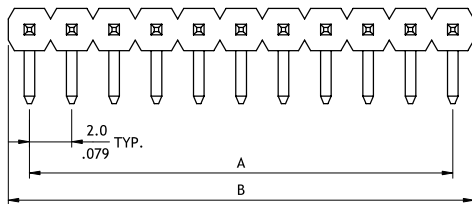
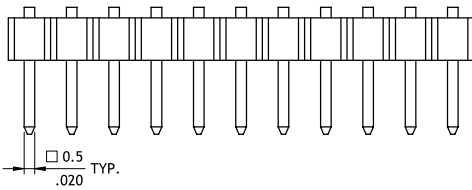
A = 2.0 x No. of Spaces
 B = A + 2.0
 Pin overall length 30.0mm max.

| Option Code | Pin Dimension | |
|-------------|---------------|-----------|
| | C | D |
| 00 | 3.9(.154) | 2.8(.110) |
| 01 | 6.8(.268) | 3.0(.118) |
| 02 | 9.0(.358) | 2.0(.079) |
| 03 | 8.0(.315) | 3.0(.118) |



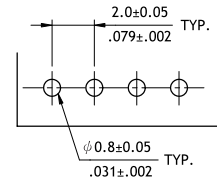
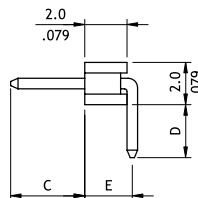
Recommended P.C. Board Layout

P/N CH11**2HA00-NH



A = 2.0 x No. of Spaces
 B = A + 2.0

| Option Code | Pin Dimension | | |
|-------------|---------------|-----------|------------|
| | C | D | E |
| 00 | 3.5(.138) | 2.5(.098) | 2.25(.089) |



Recommended P.C. Board Layout

Ordering Code

1 CH **2** **3** **4** **5** **6** **7**
11 **40** **2** **V** **A** **00** - **NH**

- 1** Series No.
- 2** No. of Circuits: 02 to 40
- 3** Plating Code: 2 = Gold flash over Nickel
- 4** Tail & Mounting Style: V = Straight DIP Type
 H = Right Angle DIP Type
- 5** Insulator Material & Color:
 A = Nylon 6T UL 94V-0, Color Black
- 6** Other Options: 00 = Standard
 *See option code table
 *Consult manufacturer for customized pin length
- 7** -NH = For Lead Free soldering process and Halogen-Free
 *Empty Code 7, if requesting non Halogen-Free material