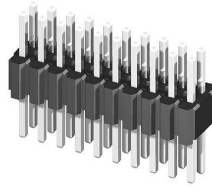
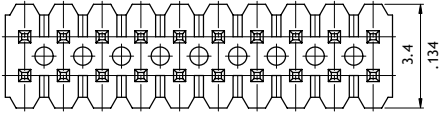


CH52 Series 1.27mm(.050") Dual Row Pin Headers

○ Mate with CB50 and CBC1 series

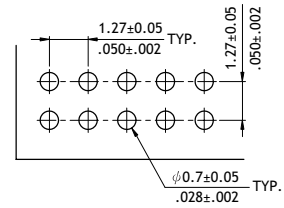
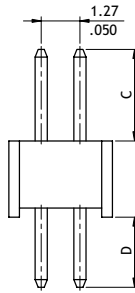
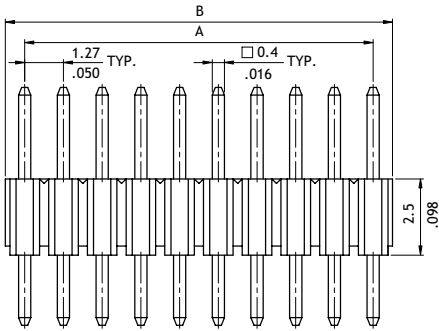


P/N CH52**2V100



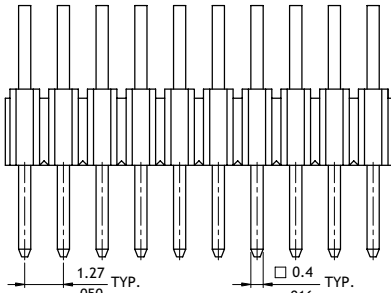
A = 1.27 X No. of Spaces
 B = A + 1.27
 Pin overall length 20.0mm max.

Option Code	Pin Dimension	
	C	D
00	3.0(.118)	2.3(.091)



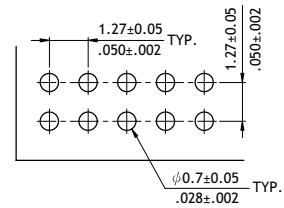
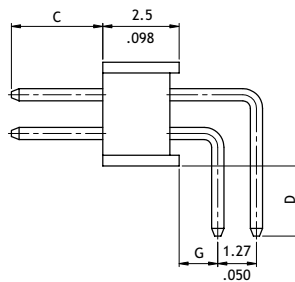
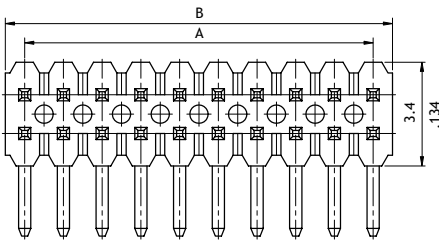
Recommended P.C. Board Layout

P/N CH52**2H100



A = 1.27 X No. of Spaces
 B = A + 1.27
 Pin overall length 20.0mm max.

Option Code	Pin Dimension		
	C	D	E
00	3.0(.118)	2.3(.091)	1.27(.050)



Recommended P.C. Board Layout

Ordering Code

① CH ② 5 ③ 2 ④ V ⑤ 1 ⑥ 00

- ① Series No.
- ② No. of Circuits: 06 to 100 (X1 = 100)
- ③ Plating Code:
2 = Gold flash over Nickel
- ④ Tail & Mounting Style: V = Vertical DIP Type
H = Right Angle DIP Type
- ⑤ Insulator Material & Color:
1 = Nylon 6T, Color Black
- ⑥ Other Options: 00 = Standard
*See option code table
*Consult manufacturer for customized pin length

CH

PIN HEADER CONNECTORS