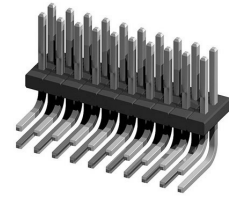
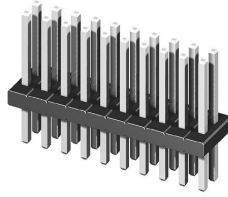
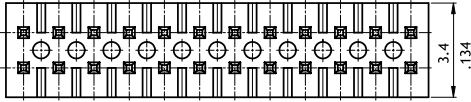


**CH51 Series 1.27mm(.050") Dual Row Pin Headers**

☉ Mate with CB50 and CBC1 series

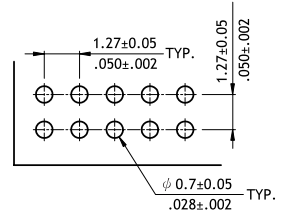
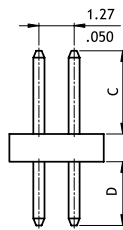
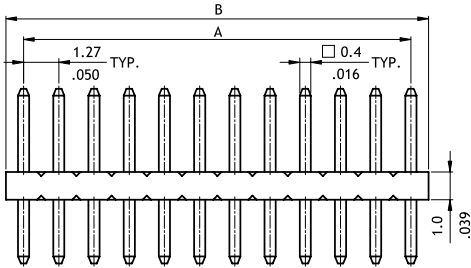


P/N CH51\*\*2V100-NH



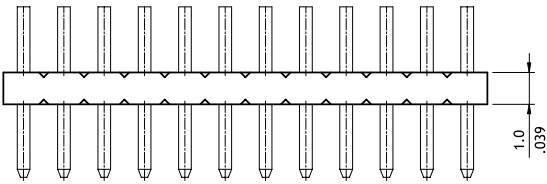
A = 1.27 X No. of Spaces  
 B = A + 1.27  
 Pin overall length 20.0mm max.

Option Code	Pin Dimension	
	C	D
00	3.0(.118)	2.3(.091)



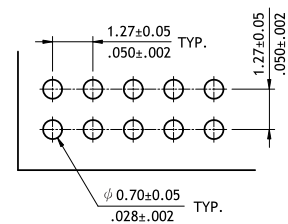
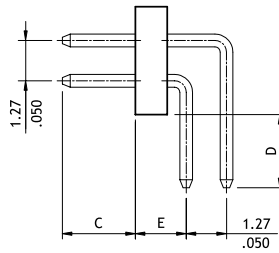
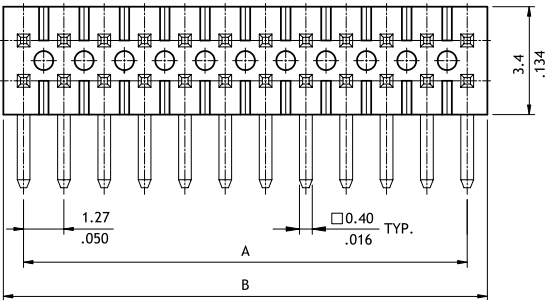
Recommended P.C. Board Layout

P/N CH51\*\*2H100-NH



A = 1.27 X No. of Spaces  
 B = A + 1.27

Option Code	Pin Dimension		
	C	D	E
00	2.0(.079)	2.3(.091)	1.6(.063)



Recommended P.C. Board Layout

**Ordering Code**

**① CH ② 5 ③ 1 ④ X ⑤ 1 ⑥ 2 ⑦ V ⑧ 1 ⑨ 0 ⑩ 0 - ⑪ NH**

- ① Series No.
- ② No. of Circuits: 06 to 100 (X1 = 100)
- ③ Plating Code:  
2 = Gold flash over Nickel
- ④ Tail & Mounting Style: V = Vertical DIP Type  
H = Right Angle DIP Type
- ⑤ Insulator Material & Color: 1 = LCP, Color Black
- ⑥ Other Options: 00 = Standard  
\*See option code table  
\*Consult manufacturer for customized pin length
- ⑦ -NH = For Lead Free soldering process and Halogen-Free

CH

PIN HEADER CONNECTORS