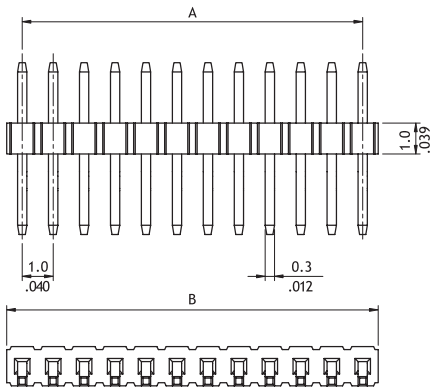
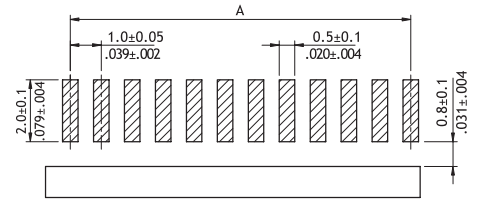


CH07 Series 1.00mm(.039") SMT Row Board Mount Connectors

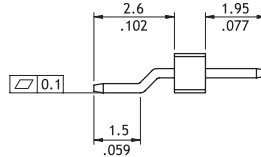
○ Mate with CB03 series



A = 1.0* No. of Spaces
B = A + 1.0



Recommended P.C. Board Layout



Ordering Code

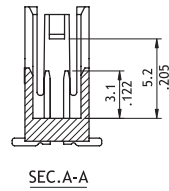
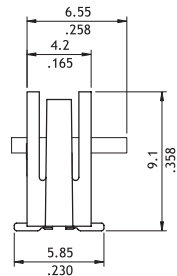
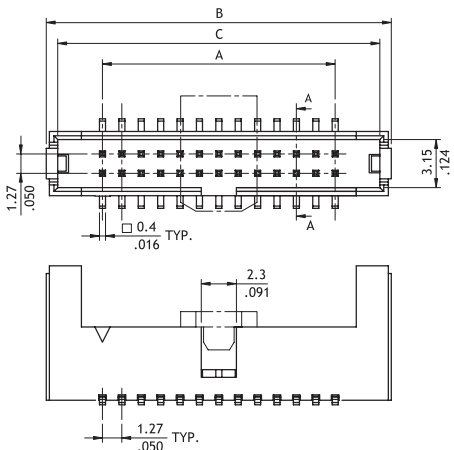
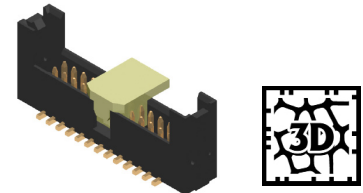
1 **2** **3** **4** **5** **6** **7**
CH07 10 2 T 1 00 - NH

- 1** Series No.
- 2** No. of Circuits: 02 to 50
- 3** Plating Code:
2 = Gold flash over 1.27 μm (50 μ") Nickel
- 4** Tail Style: T = Side Entry SMT Type
- 5** Color: 1 = Black
- 6** Pin Length Options:
- 7** -NH = For Lead Free IR process and Halogen-Free

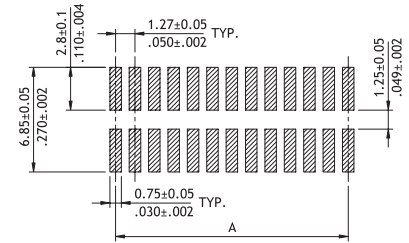
CH06 Series 1.27mm(.049") Straight SMT Dual Row Shrouded Headers

- Mate with CA02 series
- Box type with positive locking latch
- With polarizing slot

RoHS Compliant (Pb) (HF)



| Circuits | Dimension | | |
|----------|-------------|-------------|-------------|
| | A | B | C |
| 6 | 2.54(.100) | 9.91(.390) | 8.40(.331) |
| 14 | 7.62(.300) | 14.99(.590) | 13.48(.531) |
| 26 | 15.24(.600) | 22.61(.890) | 21.10(.831) |



Recommended P.C. Board Layout

Ordering Code

1 **2** **3** **4** **5** **6** **7**
CH06 26 2 M A L0 - NH

- 1** Series No.
- 2** No. of Circuits: 6, 14, 26
- 3** Plating Code:
2 = Gold flash over 1.27 μm (50 μ") Nickel
- 4** Tail Style: M = SMT Type
- 5** Color: A = Black
- 6** Other Options: L0 = Latch Type
- 7** -NH = For Lead Free IR process and Halogen-Free