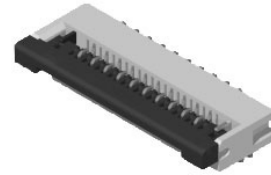
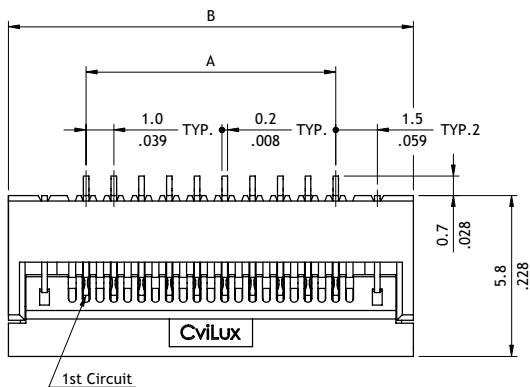


**CF25 Series 1.00mm(.039")H=2.20 SMT ZIF One-Touch FFC/FPC Connectors**

- 2.2mm above the board
- FFC/FPC zero insertion force and high holding force
- Insulator: High temperature plastic UL 94V-0, Color Nature
- Cover: High temperature plastic UL 94V-0, Color Black
- Actuator designed easy for FFC/FPC installation and reliable operation
- With metal fixed tabs to secure connector in place



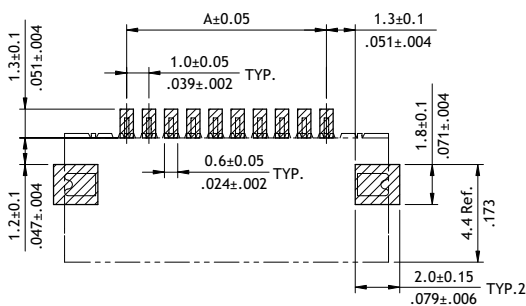
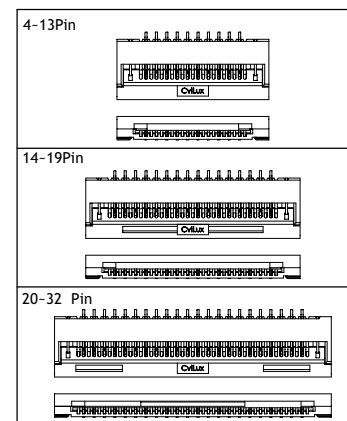
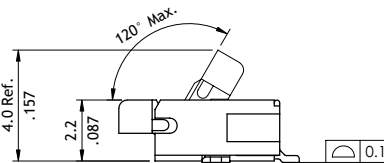
**RoHS** Compliant   



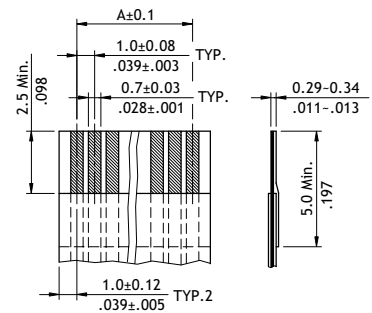
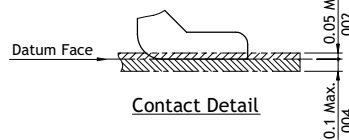
$$A = 1.0 \times \text{No. of Spaces}$$

$$B = A + 5.6$$

$$C = A + 2.1$$



Recommended P.C. Board Layout



Accommodated FFC/FPC

**Ordering Code**

① ② ③ ④ ⑤ ⑥ ⑦ ⑧ ⑨  
**CF 2 5 3 2 1 D 0 R 0 - 1 0 - NH**

① Series No.

② No. of Circuits: 04 to 32

\*Circuits not found above  
please consult manufacturer\*

③ Plating Code:

1 = Matte Tin over Nickel

F = Selective Gold flash over Nickel

④ Contact Style:

D = Downside Contact

⑤ Color: 0 = Nature

⑥ Packing:

R = Tape &amp; Reel

T = Tube

⑦ Other Options:

0 = Standard

\*Special option consult manufacturer

⑧ Pitch: 10 = 1.00 mm

⑨ -NH = For Lead Free soldering process and  
Halogen-Free