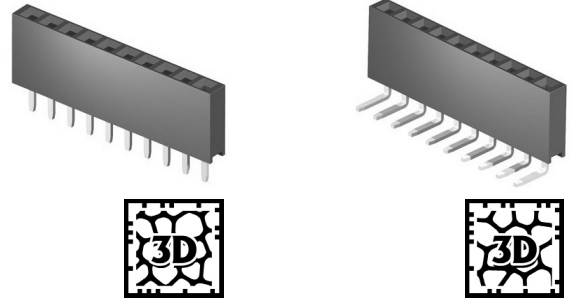


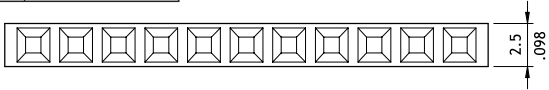
CB39 Series 2.54mm(.100") Single Row Female Headers

⊙ Mates with CH31 and CH34 series

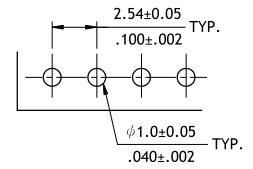
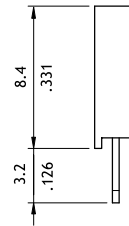
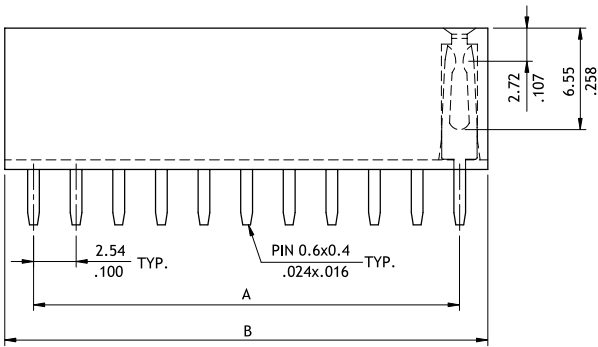
RoHS Compliant



P/N CB39**2V100

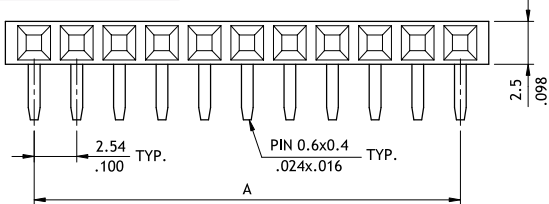


$A = 2.54 * \text{No. of Spaces}$
 $B = A + 3.04$

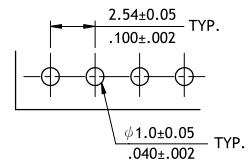
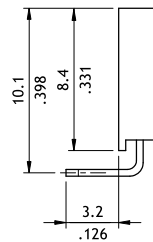
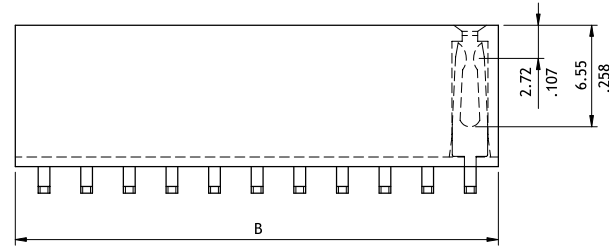


Recommended P.C. Board Layout

P/N CB39**2H100



$A = 2.54 * \text{No. of Spaces}$
 $B = A + 3.04$



Recommended P.C. Board Layout

Ordering Code

1 2 3 4 5 6
CB39 40 2 V 1 00

- 1 Series No.
- 2 No. of Circuits: 02 to 40
- 3 Plating Code:
2 = Gold flash over Nickel
- 4 Tail Style: V = Vertical
H = Right Angle

- 5 Color: 1 = Black
- 6 Other Options:
0 = Standard
*Special options consult manufacturer