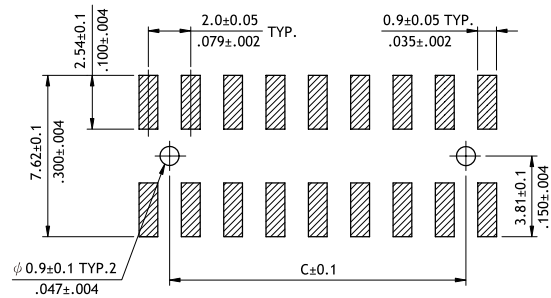
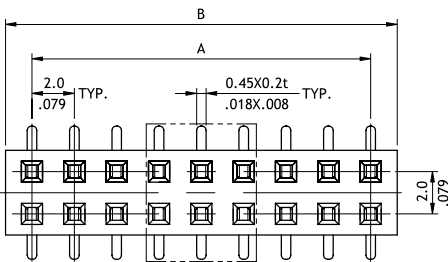
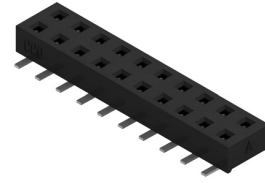
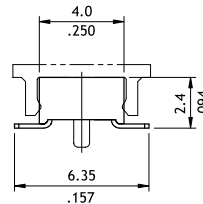
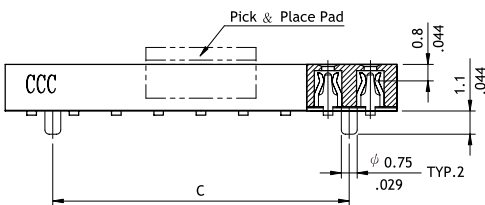


**CB76 Series 2.00mm(.079") Dual Row Female Headers**

☉ Mate with CH71, CH72 and CH75 series



Recommended P.C. Board Layout



A = 2.0 \* No. of Spaces  
 B = A + 2.5  
 C = A - 2.0

**Ordering Code**

**1**   **2**   **3**   **4**   **5**   **6**   **7**   **8**  
**CB76**   **80**   **2**   **M**   **1**   **0**   **0**   -   **NH**

- 1** Series No.
- 2** No. of Circuits: 04 to 80
- 3** Plating Code:  
2 = Gold flash over Nickel
- 4** Tail Style: M = SMT Type
- 5** Color: 1 = Black
- 6** Pegs Options:  
0 = With Pegs  
1 = Without Peg
- 7** Other Options:  
0 = Tube packing  
R = Tape & Reel (With Pick & Place Pad)
- 8** -NH = For Lead Free IR process and Halogen-Free