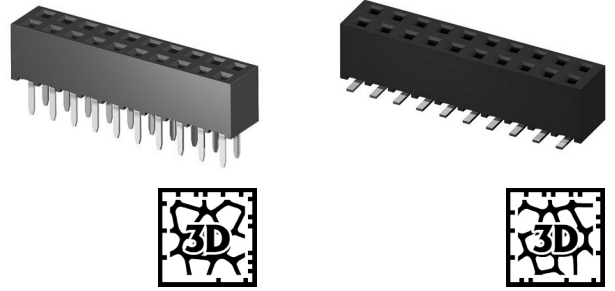
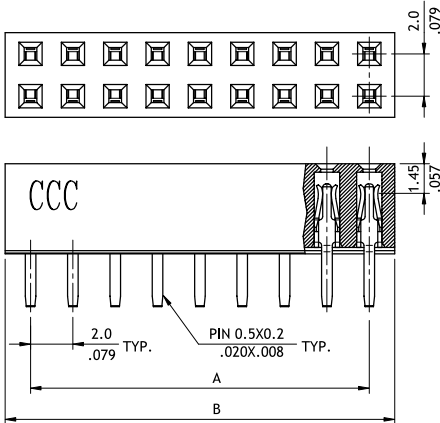


# CB74 Series 2.00mm(.079") Dual Row Female Headers

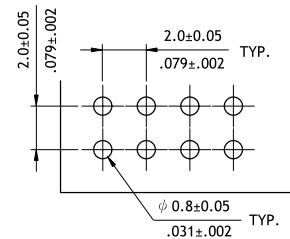
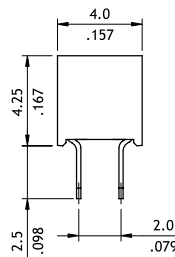
⊙ Mates with CH71, CH72 and CH75 series



P/N CB74\*\*2V100-NH

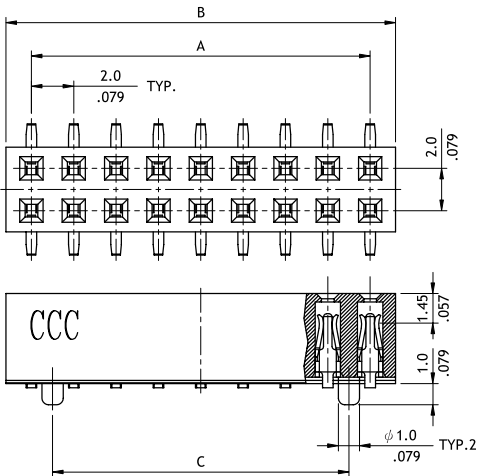


$A = 2.0 * \text{No. of Spaces}$   
 $B = A + 2.4$

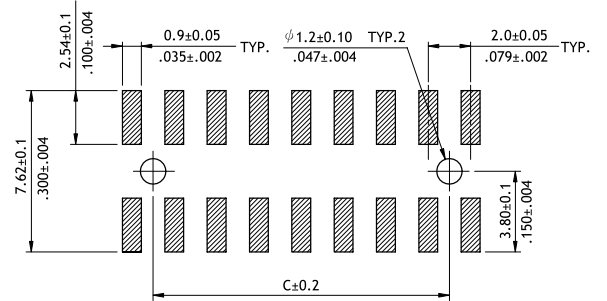
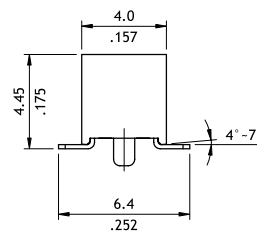


Recommended P.C. Board Layout

P/N CB74\*\*2M100-NH



$A = 2.0 * \text{No. of Spaces}$   
 $B = A + 2.4$   
 $C = A - 2.0$



Recommended P.C. Board Layout

## Ordering Code

**1**   **2**   **3**   **4**   **5**   **6**   **7**  
**CB74**   **80**   **2**   **M**   **1**   **00**   -   **NH**

- 1 Series No.
- 2 No. of Circuits: 04 to 80
- 3 Plating Code:  
2 = Gold flash over Nickel
- 4 Tail Style:  
V = Top Entry DIP Type  
M = Top Entry SMT Type

- 5 Color: 1 = Black
- 6 Other Options:  
00 = Standard  
\*Special options consult manufacturer
- 7 -NH = For Lead-Free soldering process and Halogen-Free