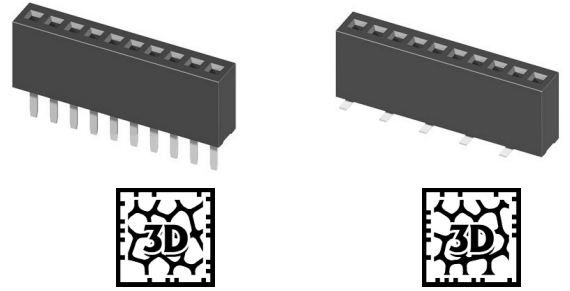
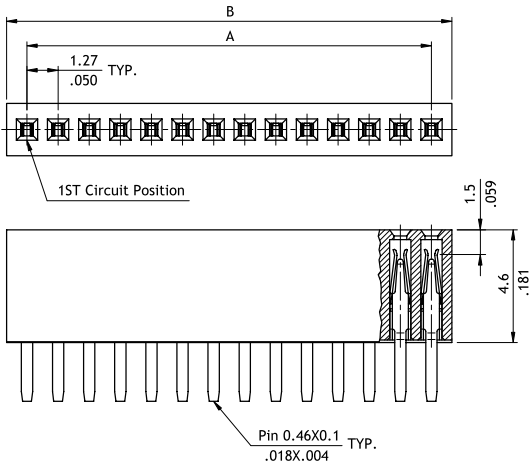


CB01 Series 1.27mm(.050") Single Row Female Headers

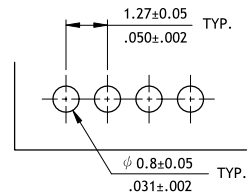
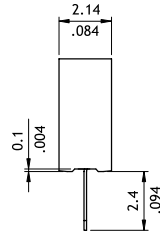
⊙ Mates with CH01, CH02 and CH03 series



P/N CB01**2D100-NH

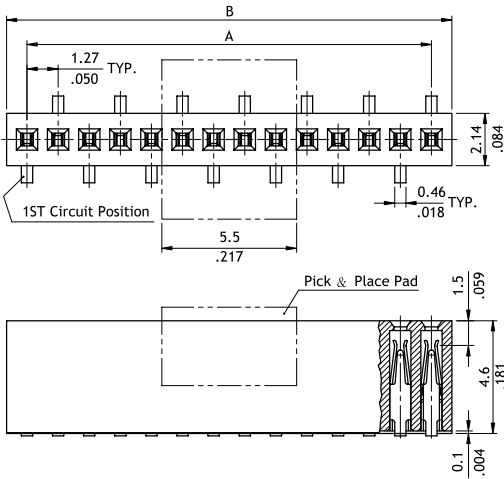


$A = 1.27 * \text{No. of Spaces}$
 $B = A + 1.67$

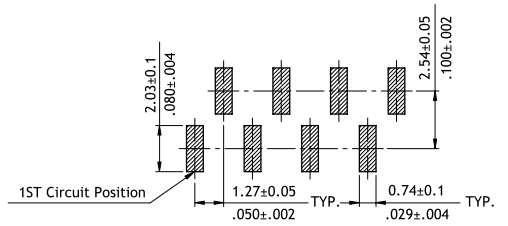
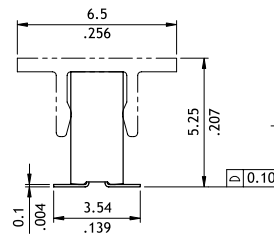


Recommended P.C. Board Layout

P/N CB01**2M100-2*-NH



$A = 1.27 * \text{No. of Spaces}$
 $B = A + 1.67$



Recommended P.C. Board Layout

Ordering Code

1 2 3 4 5 6 7 8 9
CB01 502 M100 - 2P - NH

- 1 Series No.
- 2 No. of Circuits: 04 to 50
- 3 Plating Code: 2 = Gold flash over Nickel
- 4 Tail Style: M = SMT Type
D = DIP Type
- 5 Color: 1 = Black
- 6 Other Options: 00 = Standard

- 7 Mating Header Pin Size:
2 = 0.4mm Square Pin
- 8 Packing Options:
0 = Without Pick & Place Pad (Tube)
P = With Pick & Place Pad (Tape & Reel)
*Code 7 and 8 for SMT Type only
- 9 -NH = For Lead Free soldering process and Halogen-Free