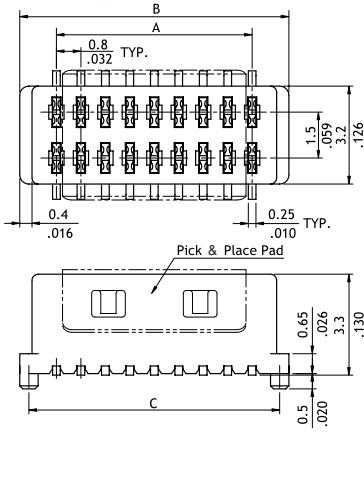
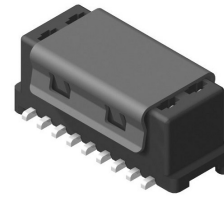


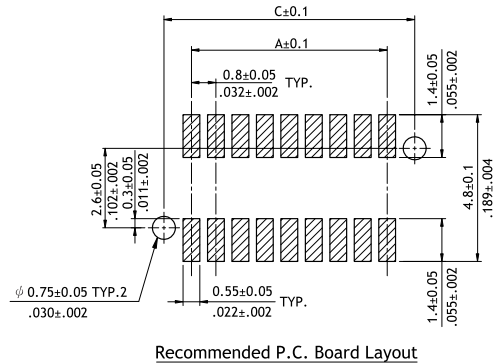
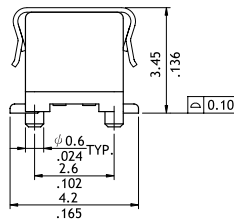
CBC3 Series 0.80mm(.032") Dual Row Female Headers

- Mate with CHC3 Header
- Insulator: High temperature plastic UL 94V-0, Color Black

RoHS Compliant



A = $0.8 \times$ No. of Spaces
 B = A + 2.4
 C = A + 1.8



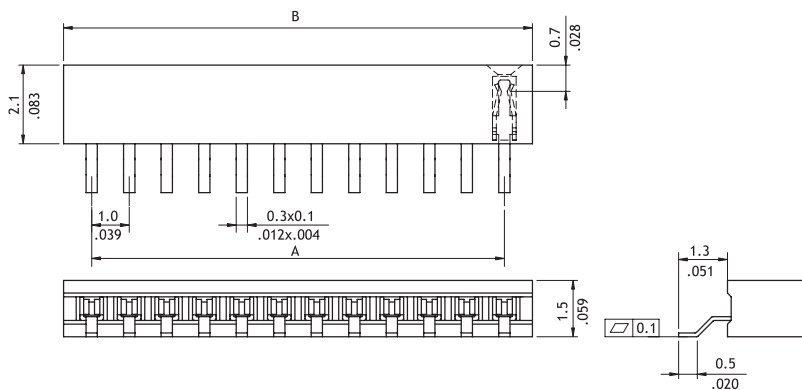
Ordering Code

1 2 3 4 5 6 7
CBC3 36 1 M 1 R 0

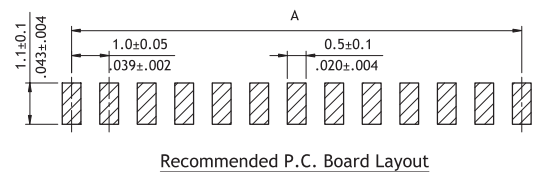
- 1** Series No.
- 2** No. of Circuits: 06 to 36
- 3** Plating Code: 1 = Tin over Nickel
2 = Gold flash over Nickel
- 4** Tail Style: M = SMT Type
- 5** Color: 1 = Black
- 6** Packing Options: R = Tape & Reel (With pick & place pad)
T = Tube
- 7** Other Options: 0 = Standard
*Special options consult manufacturer

CB03 Series 1.00mm(.039") SMT Type Single Row Pin Headers

- Mate with CH07 series



A = $1.0 \times$ No. of Spaces
 B = A + 1.0



Ordering Code

1 2 3 4 5 6 7
CB03 36 2 M 1 00 - NH

- 1** Series No.
- 2** No. of Circuits:
- 3** Plating Code: 2 = Gold flash over $1.27 \mu\text{m}$ (50μ) Nickel
- 4** Tail Style: M = SMT Type
- 5** Color: 1 = Black
- 6** Other Options: 00 = Standard
*Special options consult manufacturer
- 7** -NH = For Lead Free IR process and Halogen-Free