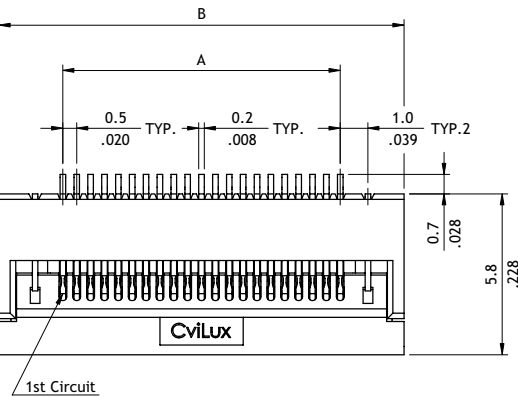
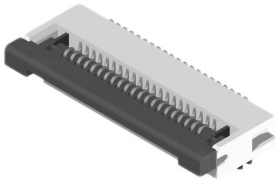
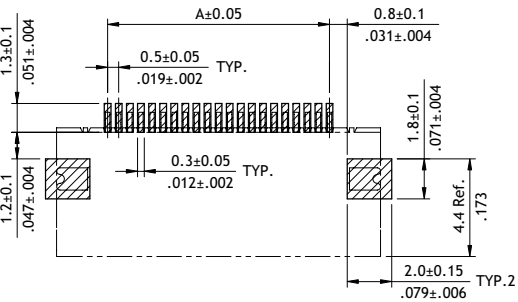
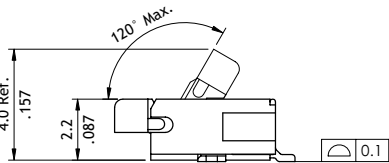
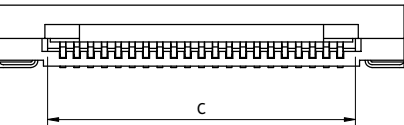


CF25 Series 0.50mm(.020")H=2.20 SMT ZIF One-Touch FFC/FPC Connectors

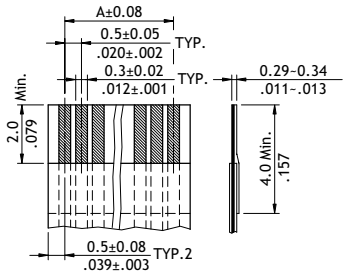
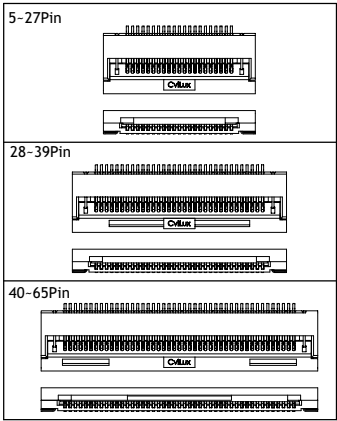
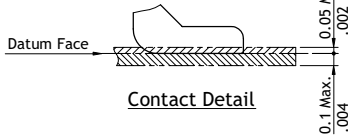
- 2.2mm above the board
- FFC/FPC zero insertion force and high retention force
- Insulator: High temperature plastic UL 94V-0, Color Nature
- Cover: High temperature plastic UL 94V-0, Color Black
- Designed easy for FFC/FPC installation and reliable operation
- With metal fixed tabs to secure connector in place



A = 0.5 x No. of Spaces
B = A + 4.6
C = A + 1.1



Recommended P.C. Board Layout



Accommodated FFC/FPC

Ordering Code

① ② ③ ④ ⑤ ⑥ ⑦ ⑧ ⑨
CF 25 65 1 D 0 R 0 - 05 - NH

- | | | |
|--|---|--|
| ① Series No. | ④ Contact Style:
D = Downside contact | ⑦ Other Options:
0 = Standard
*Special option consult manufacturer |
| ② No. of Circuits: 05 to 65
*Circuits not found above
please consult manufacturer* | ⑤ Color: 0 = Nature | ⑧ Pitch: 05 = 0.50 mm |
| ③ Plating Code:
1 = Matte Tin over Nickel
F = Selective Gold flash over Nickel | ⑥ Packing:
R = Tape & Reel
T = Tube | ⑨ -NH = For Lead Free IR process and
Halogen-Free |