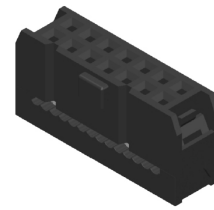


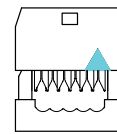
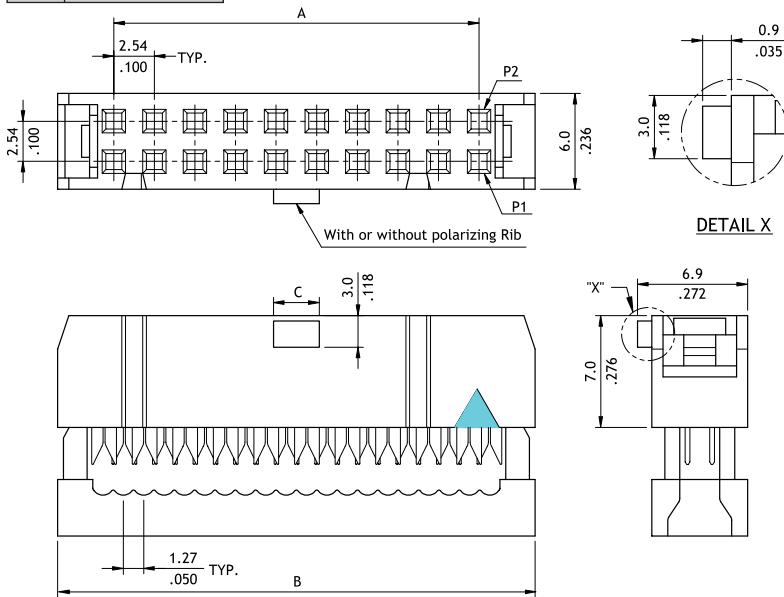
CA21 Series 2.54mm(.100") Center Spacing Flat Cable - IDC Sockets

- Mates with CH81, CH84, CH87 and CH88 Headers
- Can be used CW03 1.27mm(.050") Center Spacing flat ribbon cable

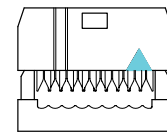
RoHS Compliant



P/N CA21**SA1*00



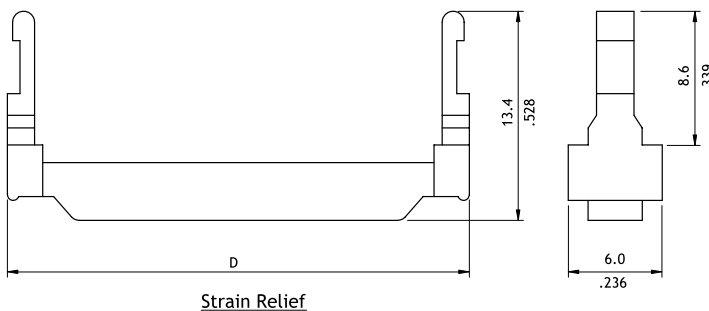
6,8 Circuits



10,12 Circuits

Circuits	Dimension			
	A	B	C	D
6	5.08(.200)	12.32(.472)	1.85(.072)	12.2(.480)
8	7.62(.300)	14.86(.585)	1.85(.072)	14.7(.579)
10	10.16(.400)	17.40(.685)	3.50(.138)	17.3(.681)
12	12.70(.500)	19.94(.785)	3.50(.138)	19.8(.780)
14	15.24(.600)	22.48(.885)	3.50(.138)	22.3(.878)
16	17.78(.700)	25.02(.985)	3.50(.138)	24.9(.980)
20	22.86(.900)	30.10(1.185)	3.50(.138)	30.0(1.181)
24	27.94(1.100)	35.18(1.381)	3.50(.138)	35.0(1.378)
26	30.48(1.200)	37.72(1.485)	3.50(.138)	37.6(1.480)
30	35.56(1.400)	42.80(1.685)	3.50(.138)	42.7(1.681)
34	40.64(1.600)	47.88(1.885)	3.50(.138)	47.7(1.878)
36	43.18(1.700)	50.42(1.985)	3.50(.138)	50.2(1.976)
40	48.26(1.900)	55.50(2.185)	3.50(.138)	55.4(2.181)
44	53.34(2.100)	60.58(2.385)	3.50(.138)	60.4(2.378)
50	60.96(2.400)	68.20(2.685)	3.50(.138)	68.1(2.681)
56	68.58(2.700)	75.82(2.985)	3.50(.138)	75.7(2.980)
60	73.66(2.900)	80.90(3.185)	3.50(.138)	80.8(3.181)
62	76.20(3.000)	83.44(3.285)	3.50(.138)	83.3(3.280)
64	78.74(3.100)	85.98(3.385)	3.50(.138)	85.8(3.378)

P/N CA21**SR100



Ordering Code

1 CA **2** **1** **2** **1** **6** **4** **S** **A** **1** **0** **0**

- 1** Series No.
- 2** No. of Circuits: See above table
- 3** Contact Type: S = Socket
- 4** Plating Code:
A = Selective Gold flash over Nickel
*Optional plating available but MOQ requested
- 5** Color: 1 = Black
- 6** Other Options:
00 = With polarizing rib (Standard)
A0 = Without polarizing rib
*Special options consult manufacturer

1 CA **2** **1** **2** **1** **6** **4** **SR** **1** **0** **0**

- 1** Series No.
- 2** Contacts: See above table
- 3** SR = Strain-Relief
- 4** Color: 100 = Black