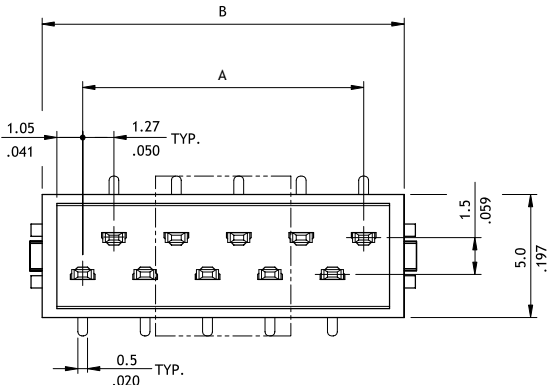
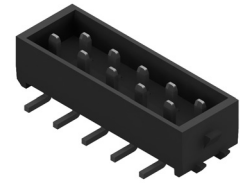
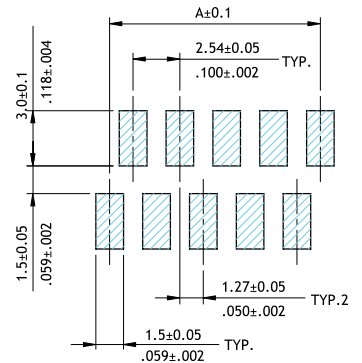
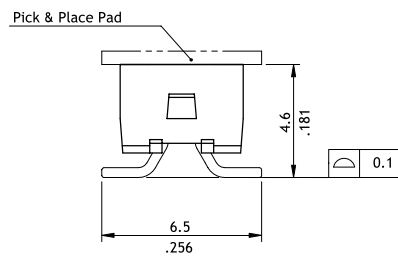
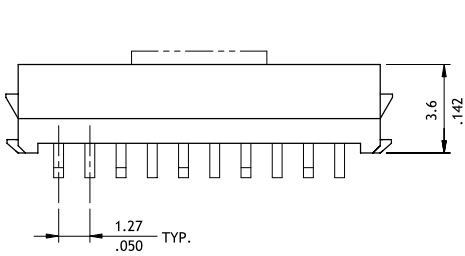


**CA30 Series 1.27mm(.050") Male IDC SMT Type Connectors**

- ⊙ Mate with CA32 connector
- ⊙ High temperature plastic UL 94V-0, color red



A = 1.27 x No. of Spaces  
 B = A + 3.3



Solder Pad Pattern

**Ordering Code**

**① CA ② 30 ③ M ④ 1 ⑤ 3 ⑥ R0**

- ① Series No.
- ② No. of Circuits: 04 to 26
- ③ Contact Type: M = SMT
- ④ Plating Code:  
 1 = Matte Tin over Nickel  
 \*Optional plating available but MOQ requested

- ⑤ Color: 3 = Red
- ⑥ Packing Options:  
 R0 = With PAD Tape & Reel  
 RN = Without PAD Tape & Reel  
 T0 = Without PAD & Tube  
 \*Special options consult manufacturer

CA

IDC CONNECTORS