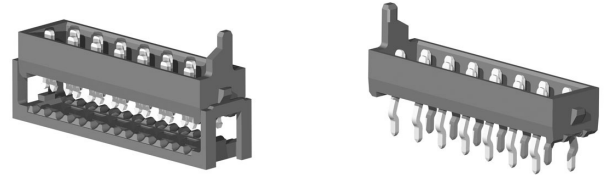


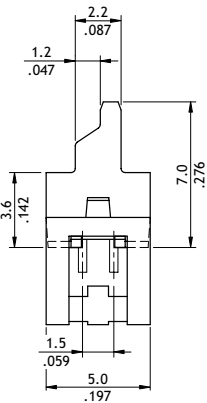
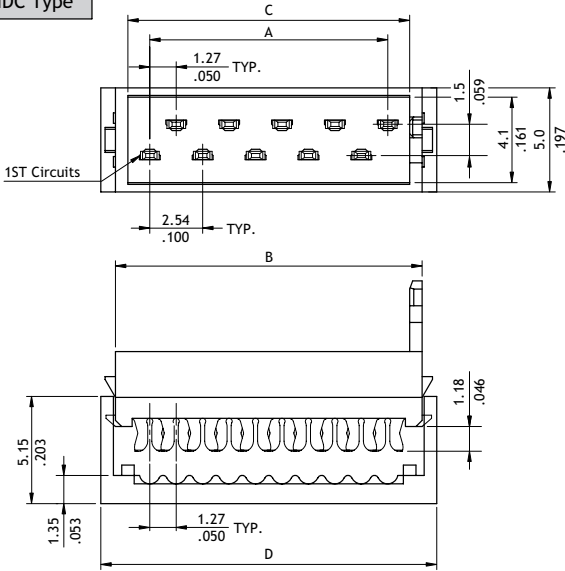
# CA30 Series 1.27mm(.050") Male IDC & DIP Type Connectors

- Can be used CW03 1.27mm(.050") Center Spacing flat ribbon cable
- Mate with CA32 connector

RoHS Compliant

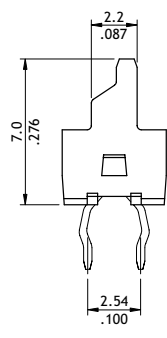
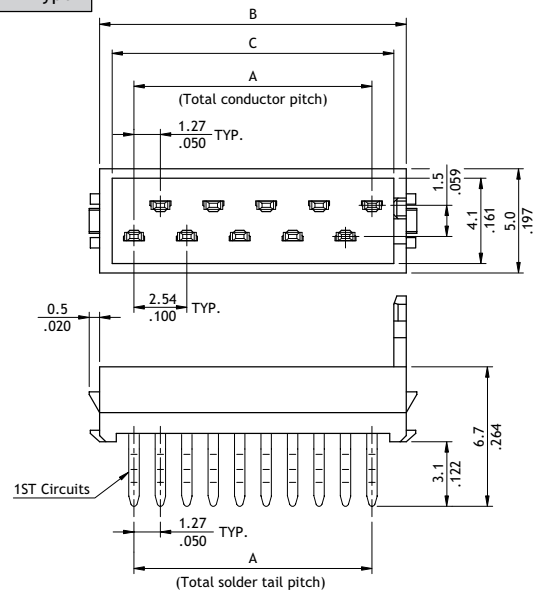


**IDC Type**

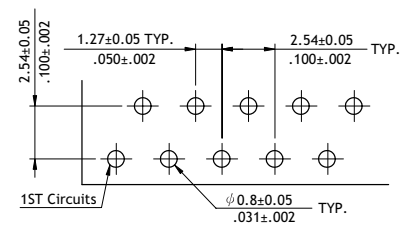


A= 1.27 x No. of Spaces  
 B= A + 3.3  
 C= A + 2.1  
 D= A + 4.7

**DIP Type**



A= 1.27 x No. of Spaces  
 B= A + 3.3  
 C= A + 2.1



Recommended P.C. Board Layout

## Ordering Code

**1** **2** **3** **4** **5** **6** **7**  
**CA30 26 P 1 3 0 0**

- 1** Series No.
- 2** No. of Circuits: 04 to 26
- 3** Contact Type: P = Plug
- 4** Plating Code:  
 1 = Matte Tin over Nickel  
 \*Optional plating available but MOQ requested

- 5** Color: 3 = Red
- 6** Type: 0 = DIP Type  
 I = IDC Type
- 7** Other Options:  
 0 = Standard  
 \*Special options consult manufacturer