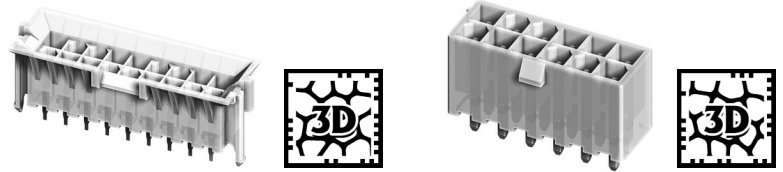
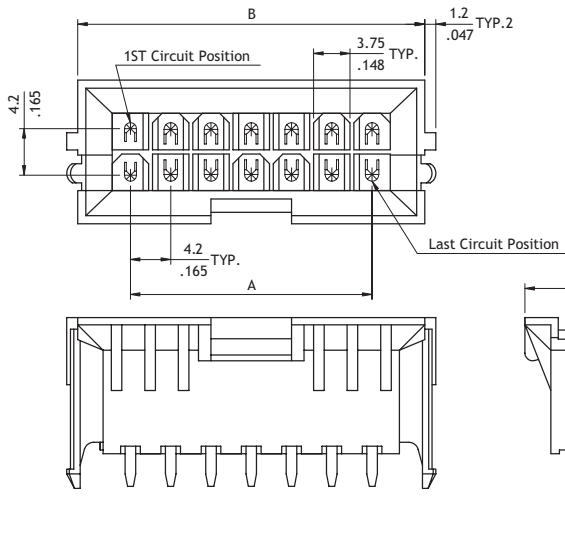


CP-013 Series 4.20mm (.165") Straight DIP Solder Headers

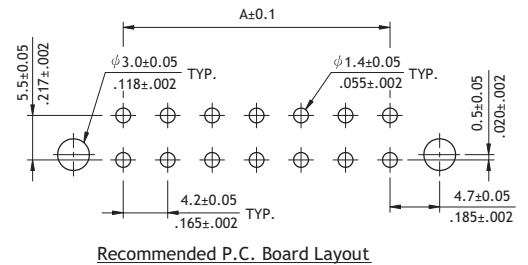
- Optional PCB mounting pegs
- Mates with CP-011 connector
- Nylon 66 UL 94V-0 or V-2 insulator material
- Glow wire test material available



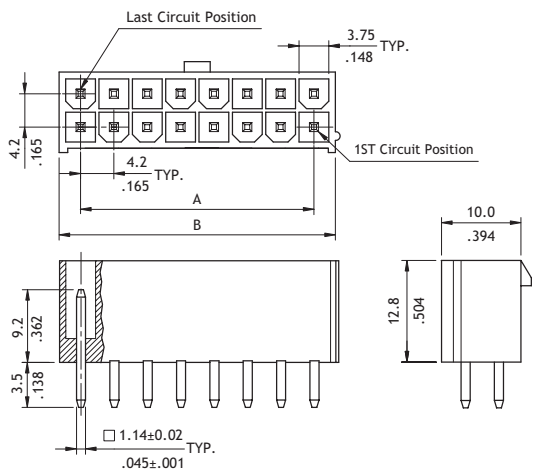
P/N CP-013**160 / CP-013**170 / CP-013**1H0



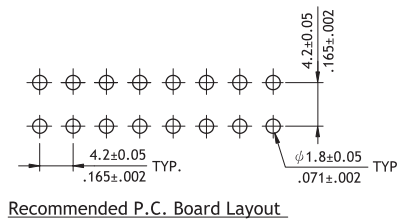
Circuits	Dimension	
	A	B
4	4.2(.165)	15.1(.594)
6	8.4(.331)	19.3(.760)
8	12.6(.496)	23.5(.925)
10	16.8(.661)	27.7(1.091)
14	25.2(.992)	36.1(1.421)
16	29.4(1.157)	40.3(1.587)
18	33.6(1.323)	44.5(1.752)
24	46.2(1.819)	57.1(2.248)



P/N CP-013**180 / CP-013**190 / CP-013**1J0



Circuits	Dimension	
	A	B
2	-	6.0(.236)
4	4.2(.165)	10.2(.402)
6	8.4(.331)	14.4(.567)
8	12.6(.496)	18.6(.732)
10	16.8(.661)	22.8(.898)
12	21.0(.827)	27.0(1.063)
14	25.2(.992)	31.2(1.228)
16	29.4(1.157)	35.4(1.394)
18	33.6(1.322)	39.6(1.559)
20	37.8(1.487)	43.8(1.724)
22	42.0(1.652)	48.0(1.890)
24	46.2(1.817)	52.2(2.055)



Ordering Code

1 **2** **3** **4** **5** **6**
CP - 0 1 3 2 4 1 6 0

- 1** Series No.
- 2** Connector Type:
3 = Straight PCB mount header
- 3** No. of Circuits:
see above table
- 4** Plating: 1 = Tin over Nickel
- 5** Variation:
6 = UL 94V-2 (B.M.I Type)
7 = UL 94V-0 (B.M.I Type)
8 = UL 94V-2 (with square pin)
9 = UL 94V-0 (with square pin)
J = GWT UL 94V-2 (with square pin)
H = GWT UL 94V-0 (B.M.I Type)
- 6** Other Options:
0 = Standard
*Special options consult manufacturer