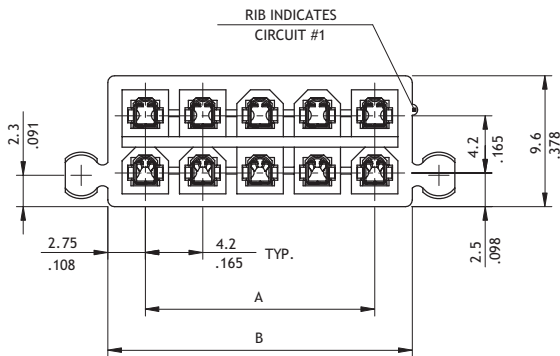


CP-011 Series 4.20mm (.165") Receptacle Board Mount Connectors

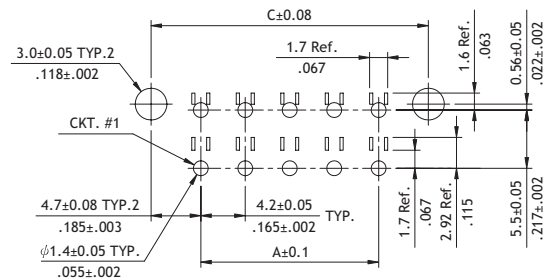
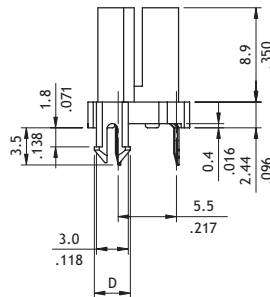
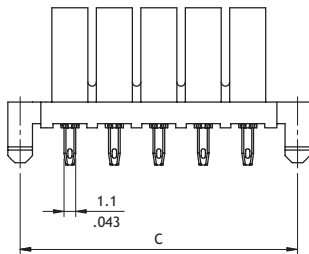
- With Board Locks
- Available in 2 through 24 circuits
- Mates with CP-013 or CP-014 B.M.I Type Connector
- Nylon 66 UL 94V-0 or V-2 and Nylon 46 UL 94V-0 insulator material
- Glow wire test material available



CP



Circuits	Dimension		
	A	B	C
2	-	5.5(.217)	9.4(.370)
4	4.2(.165)	9.7(.382)	13.6(.535)
6	8.4(.331)	13.9(.547)	17.8(.701)
8	12.6(.496)	18.1(.713)	22.0(.866)
10	16.8(.661)	22.3(.878)	26.2(1.031)
12	21.0(.827)	26.5(1.043)	30.4(1.197)
14	25.2(.992)	30.7(1.209)	34.6(1.362)
16	29.4(1.157)	34.9(1.374)	38.8(1.528)
18	33.6(1.322)	39.1(1.539)	43.0(1.693)
20	37.8(1.487)	43.3(1.705)	47.2(1.858)
22	42.0(1.652)	47.5(1.870)	51.4(2.024)
24	46.2(1.817)	51.7(2.035)	55.6(2.189)



Recommended P.C. Board Layout

Ordering Code

1 **2** **3** **4** **5** **6**
CP - 0 1 1 2 4 1 1 0

- 1** Series No.
- 2** Connector Type:
1 = Receptacle
- 3** No. of Circuits:
02 to 24
- 4** Plating: 1 = Tin over Nickel
- 5** Variation:
0 = UL 94V-0 (PA46) (DIM. D = 3.2mm)
1 = UL 94V-0 (PA66) (DIM. D = 3.4mm)
2 = UL 94V-2 (PA66) (DIM. D = 3.4mm)
3 = UL 94V-2 (GWT) (DIM. D = 3.4mm)
- 6** Other Options: 0 = Standard
*Special options consult manufacturer

POWER CONNECTOR