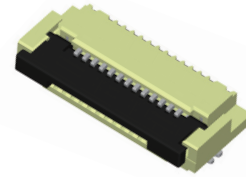
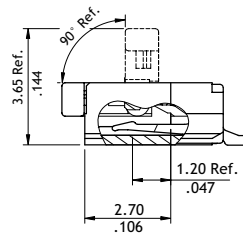
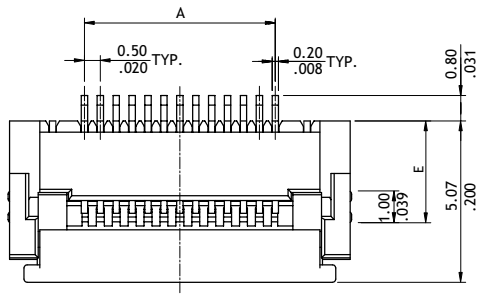


CF31 Series 0.50mm(.020")H=1.95 SMT ZIF One-Touch FFC/FPC Connectors

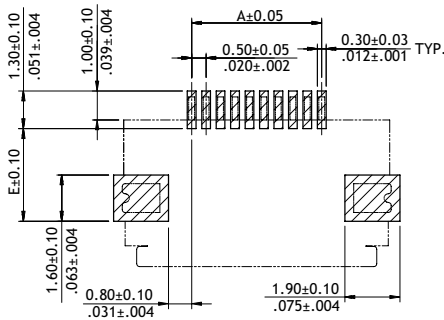
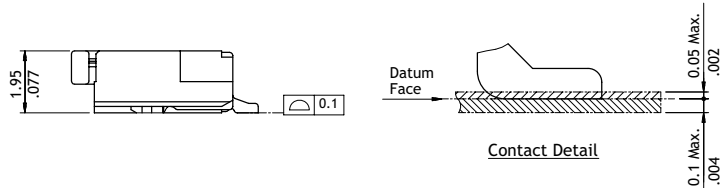
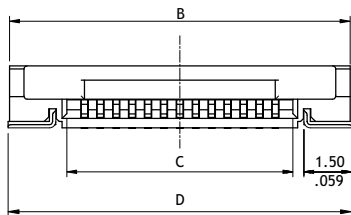
- ⊙ 1.95mm above the board
- ⊙ FFC/FPC zero insertion force and high holding force
- ⊙ Insulation: High temperature plastic UL 94V-0, Color Nature
- ⊙ Cover: High temperature plastic UL 94V-0, Color Black
- ⊙ Actuator designed easy for FFC/FPC installation and reliable operation
- ⊙ With metal fixed tabs to secure connector in place



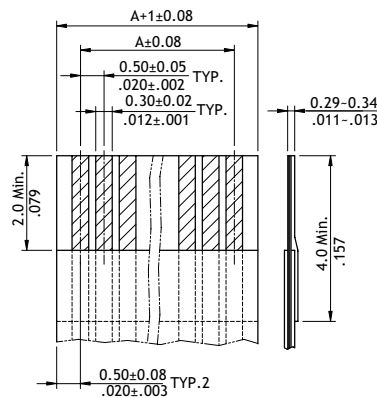
RoHS Compliant



A = 0.5 x No. of Spaces
 B = A + 4.7
 C = A + 1.1
 D = A + 4.8



Recommended P.C. Board Layout



Accommodated FFC/FPC

Ordering Code

① **CF** **②** **31** **③** **30** **④** **1** **⑤** **D** **⑥** **0** **⑦** **R** **⑧** **0** - **⑧** **05** - **⑨** **NH**

- ①** Series No.
- ②** No. of Circuits: 04 to 61
Circuits not found above please consult manufacturer
- ③** Plating Code:
1 = Tin over Nickel
2 = Matte Gold flash over Nickel
- ④** Contact Style:
D = Downside Contact
- ⑤** Color: 0 = Nature
- ⑥** Packing:
R = Tape & Reel
- ⑦** Other Options:
0 = Without Mylar, E=3.20mm
2 = Without Mylar, E=2.85mm
- ⑧** Pitch: 05 = 0.50 mm
- ⑨** -NH = For Lead Free IR process and Halogen-Free