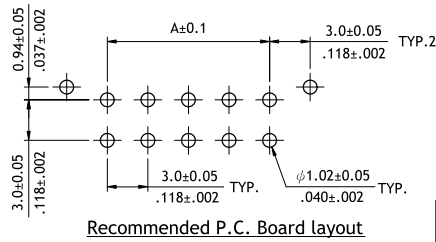
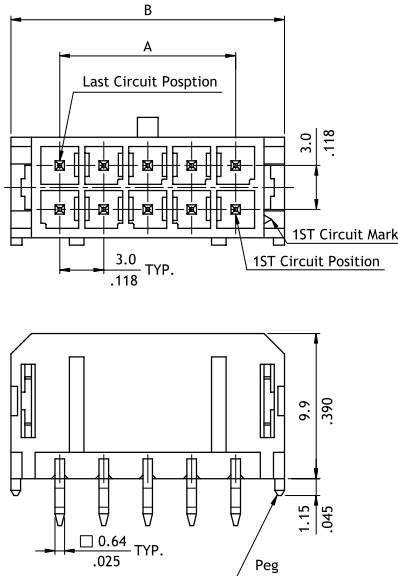
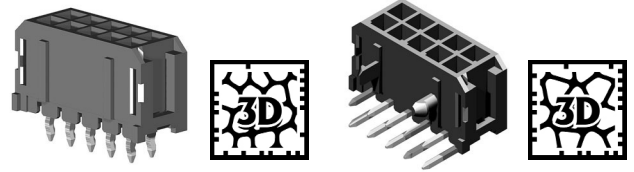
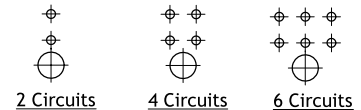
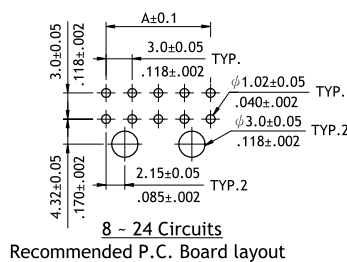
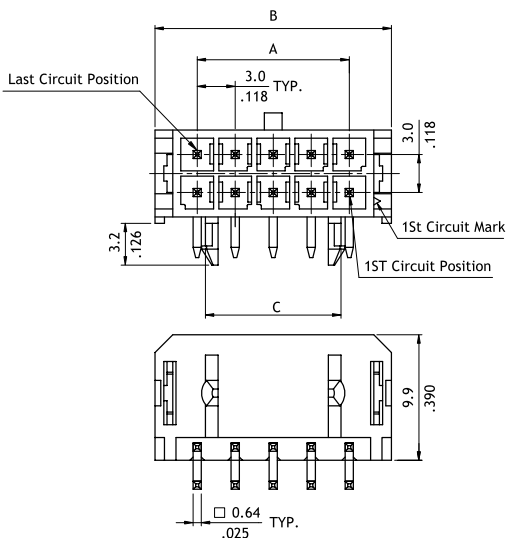
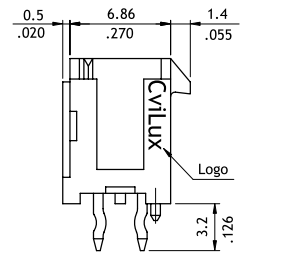


CP35 Series 3.00mm(.118") Dual Row Board Mount Headers

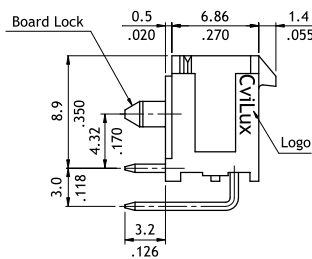
- ⊙ Mate with CP35 Connector
- ⊙ Shrouded header with PCB mounting pegs or board locks
- ⊙ Available straight and right angle solder Tails



Circuits	Dimension	
	A	B
2	—	6.7(.264)
4	3.0(.118)	9.7(.382)
6	6.0(.236)	12.7(.500)
8	9.0(.354)	15.7(.618)
10	12.0(.472)	18.7(.657)
12	15.0(.591)	21.7(.854)
14	18.0(.709)	24.7(.972)
16	21.0(.827)	27.7(1.091)
18	24.0(.945)	30.7(1.209)
20	27.0(1.063)	33.7(1.327)
22	30.0(1.181)	36.7(1.445)
24	33.0(1.299)	39.7(1.563)



Circuits	Dimension		
	A	B	C
2	—	6.7(.264)	—
4	3.0(.118)	9.7(.382)	—
6	6.0(.236)	12.7(.500)	—
8	9.0(.354)	15.7(.618)	7.7(.303)
10	12.0(.472)	18.7(.657)	10.7(.421)
12	15.0(.591)	21.7(.854)	13.7(.539)
14	18.0(.709)	24.7(.972)	16.7(.657)
16	21.0(.827)	27.7(1.091)	19.7(.776)
18	24.0(.945)	30.7(1.209)	22.7(.894)
20	27.0(1.063)	33.7(1.327)	25.7(1.012)
22	30.0(1.181)	36.7(1.445)	28.7(1.130)
24	33.0(1.299)	39.7(1.563)	31.7(1.248)



Ordering Code

1 **CP35**
2 **24**
3 **P**
4 **1**
5 **V**
6 **0**
7 **0**
8 **-NH**

- 1** Series No.
- 2** No. of Circuits: 02 to 24
- 3** P = Plug
- 4** Plating:
1 = Matte Tin over Nickel
*Optional plating available but MOQ requested
- 5** Contact Type:
V = Straight
H = Right Angle
- 6** Mount Type:
0 = DIP Type
- 7** Other Options:
0 = With pegs (Straight)
0 = With plastic board locks (Right Angle)
- 8** -LF = For Lead Free soldering process
-NH = For Lead Free soldering process and Halogen-Free