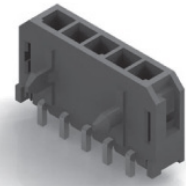
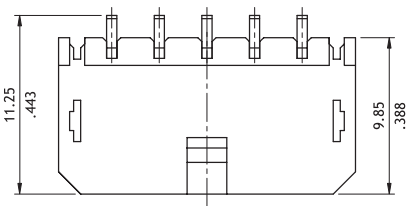


**CP35 Series 3.00mm(.118") Single Row Side Entry SMT Headers**

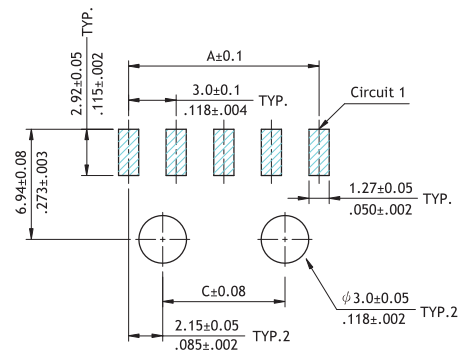
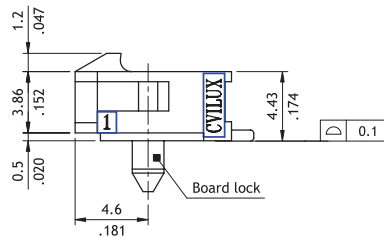
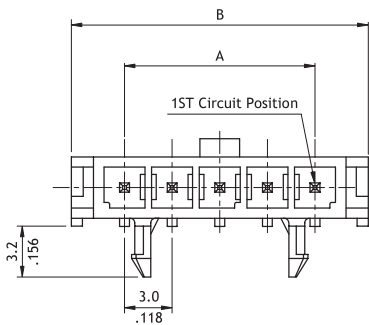
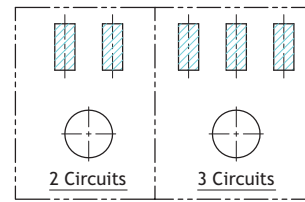
- Mate with CP35 Connector
- Shrouded header with board locks or fixed tabs
- High temperature plastic for SMT process



CP



CIRCUITS	DIM.A	DIM.B	DIM.C
2	3.00(.118)	9.65(.380)	NA
3	6.00(.236)	12.65(.498)	NA
4	9.00(.354)	15.65(.616)	4.7(.185)
5	12.00(.472)	18.65(.734)	7.7(.303)
6	15.00(.591)	21.65(.852)	10.7(.421)
7	18.00(.709)	24.65(.970)	13.7(.539)
8	21.00(.827)	27.65(1.089)	16.7(.657)
9	24.00(.945)	30.65(1.207)	19.7(.776)
10	27.00(1.063)	33.65(1.325)	22.7(.894)
11	30.00(1.181)	36.65(1.443)	25.7(1.012)
12	33.00(1.299)	39.65(1.561)	28.7(1.130)



Recommended P.C. Board Layout

**Ordering Code**

**① CP 35 ② 1 2 ③ P ④ 1 ⑤ H ⑥ S ⑦ P - ⑧ S - ⑨ NH**

- ① Series No.
- ② No. of Circuits: 02 to 12
- ③ P = Plug
- ④ Plating: 1 = Matte Tin over Nickel  
\*Optional plating available but MOQ requested
- ⑤ Contact Type: H = Side Entry
- ⑥ Mount Type: S = SMT Type

- ⑦ Other Options:  
P = With plastic board lock
- ⑧ S= Single Row Header
- ⑨ -LF = For Lead Free soldering process  
-NH = For Lead Free soldering process and Halogen-Free

POWER CONNECTOR