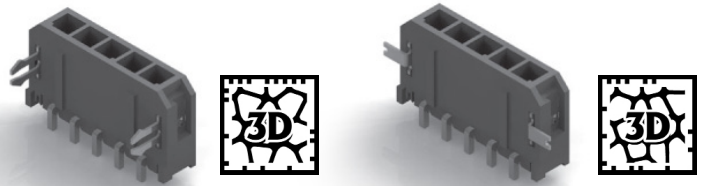
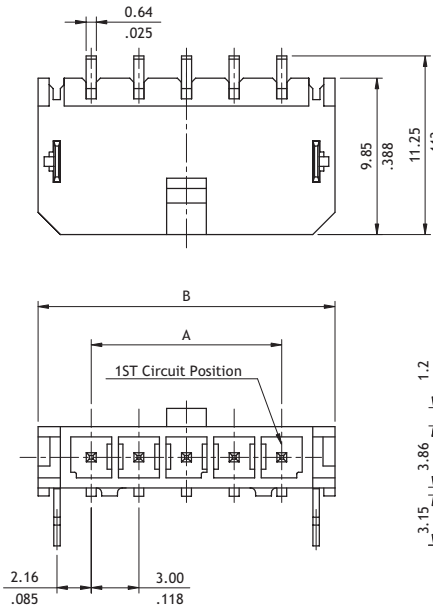


CP35 Series 3.00mm(.118") Single Row Side Entry SMT Headers

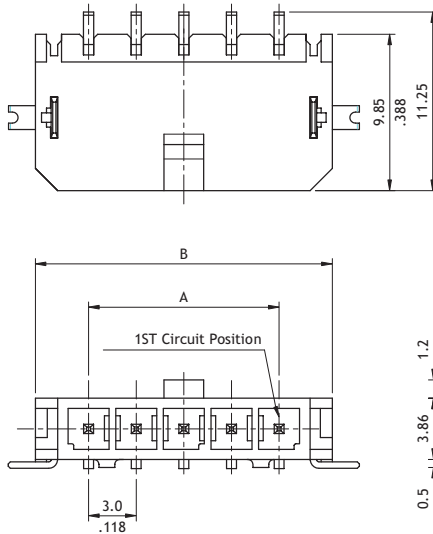
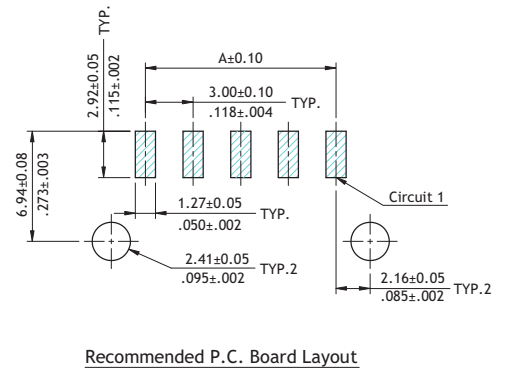
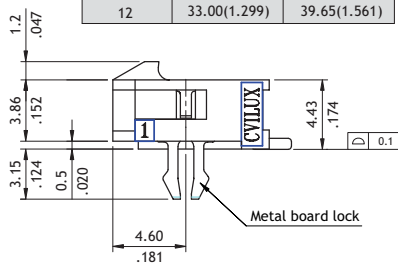
- Mate with CP35 Connector
- Shrouded header with board locks or fixed tabs
- High temperature plastic for SMT process



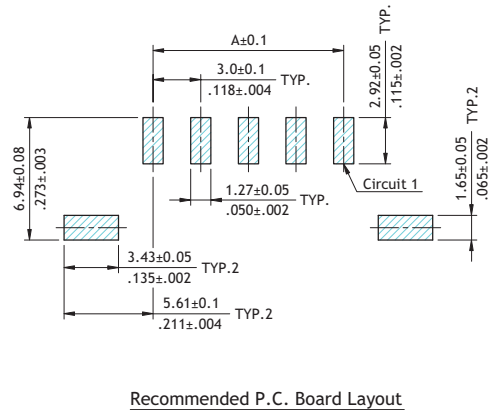
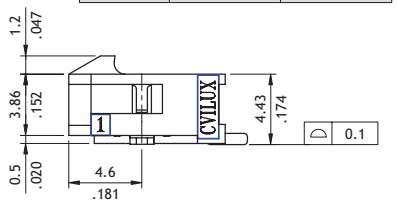
CP



CIRCUITS	DIM.A	DIM.B
2	3.00(.118)	9.65(.380)
3	6.00(.236)	12.65(.498)
4	9.00(.354)	15.65(.616)
5	12.00(.472)	18.65(.734)
6	15.00(.591)	21.65(.852)
7	18.00(.709)	24.65(.970)
8	21.00(.827)	27.65(1.089)
9	24.00(.945)	30.65(1.207)
10	27.00(1.063)	33.65(1.325)
11	30.00(1.181)	36.65(1.443)
12	33.00(1.299)	39.65(1.561)



CIRCUITS	DIM.A	DIM.B
2	3.00(.118)	9.65(.380)
3	6.00(.236)	12.65(.498)
4	9.00(.354)	15.65(.616)
5	12.00(.472)	18.65(.734)
6	15.00(.591)	21.65(.852)
7	18.00(.709)	24.65(.970)
8	21.00(.827)	27.65(1.089)
9	24.00(.945)	30.65(1.207)
10	27.00(1.063)	33.65(1.325)
11	30.00(1.181)	36.65(1.443)
12	33.00(1.299)	39.65(1.561)



Ordering Code

① CP 35 ② 1 2 ③ P ④ 1 ⑤ H ⑥ S ⑦ 0 - ⑧ S - ⑨ NH

- ① Series No.
- ② No. of Circuits: 02 to 12
- ③ P = Plug
- ④ Plating: 1 = Matte Tin over Nickel
*Optional plating available but MOQ requested
- ⑤ Contact Type: H = Side Entry
- ⑥ Mount Type: S = SMT Type

- ⑦ Other Options:
0 = With Metal board lock
T = With With Fixed Tabs
(Available for Tape & Reel)
- ⑧ S= Single Row Header
- ⑨ -LF = For Lead Free soldering process
-NH = For Lead Free soldering process and Halogen-Free