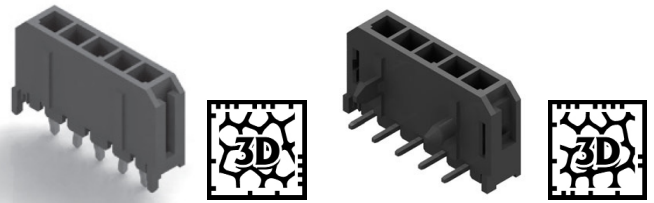
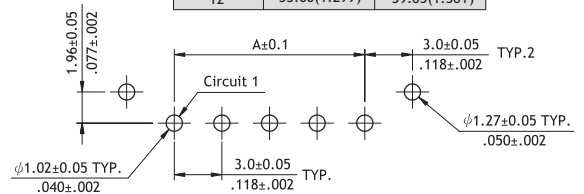
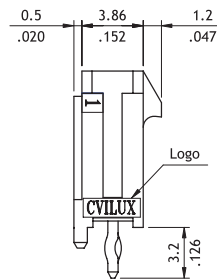
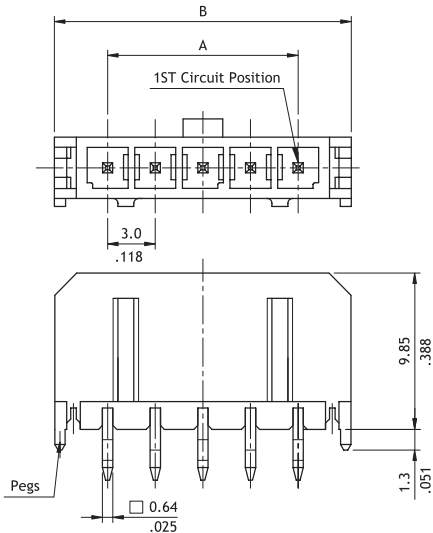


CP35 Series 3.00mm(.118") Single Row Board Mount Headers

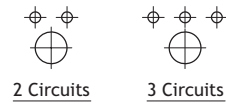
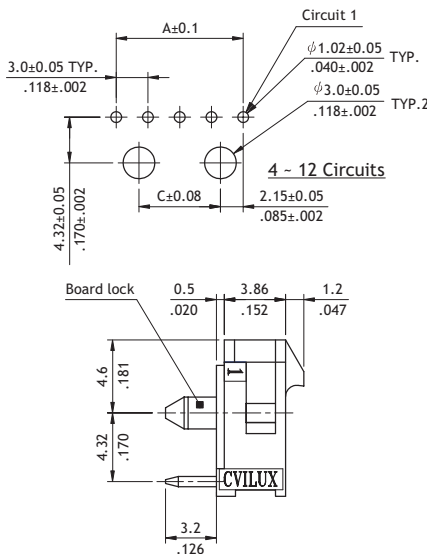
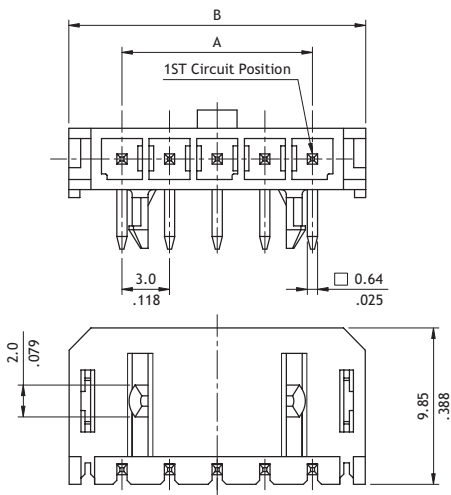
- Mate with CP35 Connector
- Shrouded header with PCB mounting pegs or board locks
- Available straight and right angle solder Tails



CIRCUITS	DIM.A	DIM.B
2	3.00(.118)	9.65(.380)
3	6.00(.236)	12.65(.498)
4	9.00(.354)	15.65(.616)
5	12.00(.472)	18.65(.734)
6	15.00(.591)	21.65(.852)
7	18.00(.709)	24.65(.970)
8	21.00(.827)	27.65(1.089)
9	24.00(.945)	30.65(1.207)
10	27.00(1.063)	33.65(1.325)
11	30.00(1.181)	36.65(1.443)
12	33.00(1.299)	39.65(1.561)



Recommended P.C. Board layout



CIRCUITS	DIM.A	DIM.B	DIM.C
2	3.00(.118)	9.65(.380)	NA
3	6.00(.236)	12.65(.498)	4.7(.185)
4	9.00(.354)	15.65(.616)	7.7(.303)
5	12.00(.472)	18.65(.734)	10.7(.421)
6	15.00(.591)	21.65(.852)	13.7(.539)
7	18.00(.709)	24.65(.970)	16.7(.657)
8	21.00(.827)	27.65(1.089)	19.7(.776)
9	24.00(.945)	30.65(1.207)	22.7(.894)
10	27.00(1.063)	33.65(1.325)	25.7(1.012)
11	30.00(1.181)	36.65(1.443)	28.7(1.130)
12	33.00(1.299)	39.65(1.561)	31.7(1.248)

Ordering Code

① CP 35 ② 1 2 ③ P ④ 1 ⑤ V ⑥ 0 0 - ⑦ S - ⑧ NH

- ① Series No.
- ② No. of Circuits: 02 to 12
- ③ P = Plug
- ④ Plating:
1 = Matte Tin over Nickel
*Optional plating available but MOQ requested
- ⑤ Contact Type:
V = Straight
H = Right Angle
- ⑥ Mount Type:
0 = DIP Type
- ⑦ Other Options:
0 = With pegs (Straight)
0 = With plastic board lock (Right Angle)
- ⑧ S= Single Row Header
- ⑨ -LF = For Lead Free soldering process
-NH = For Lead Free soldering process and Halogen-Free