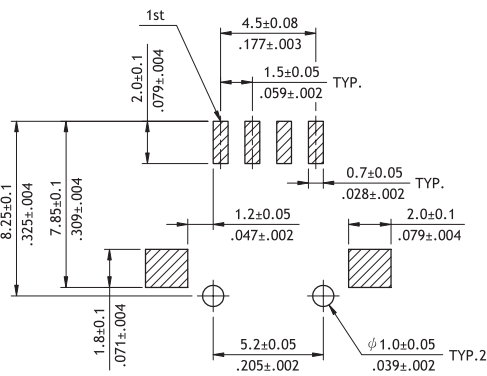
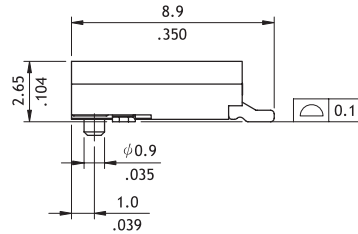
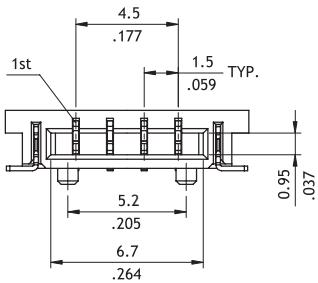
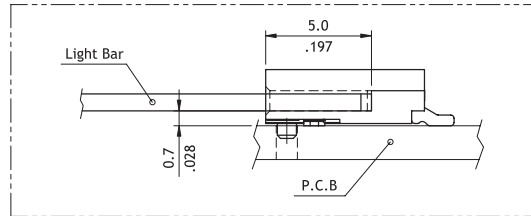
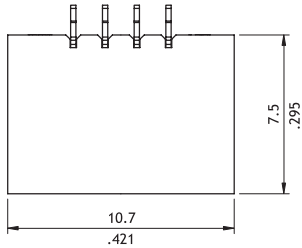


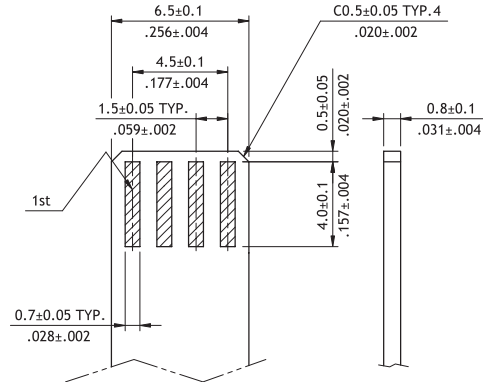
**CP14 Series 1.50mm(.059") Single Row Side Entry SMT Headers**

- Simplify manufacturing procedure
- Reduce the Cost
- Insulator: High temperature plastic UL 94V-0
- With metal fixed tabs to secure connector in place

**RoHS Compliant**  



Recommended P.C.B Layout



Recommended FR4 Layout

**Ordering Code**

**① CP 14 ② 04 ③ M ④ 1 ⑤ H ⑥ R ⑦ B - ⑧ NH**

- ① Series No.
- ② No. of Circuits: 02 to 10  
(Available: 4)  
\*Circuits not found above,  
please consult manufacturer
- ③ M = SMT Type
- ④ Plating: 1 = Matte Tin over Nickel

- ⑤ Type: H = Side Entry
- ⑥ Packing Options:  
R = Tape & Reel
- ⑦ Other Options:  
B = Upside Contact
- ⑧ -NH = For Lead Free soldering process and  
Halogen-Free

CP

POWER CONNECTOR